



On-line PICASSO PROJECT

**Comprehensive Catalogue Raisonné
Prof. Dr. Enrique Mallen**

1966



Personnages (Atelier de peintre). Mougins. 22-January/1966. Ink & wash ink on paper. [46 x 54,8] 45,9 x 54,8 cm. Hélène Bailly Gallery. Formerly Galerie Beyeler, Basel.

OPP.66:057; PP.66:001; Z.XXV:202; UW.93*:40

Femme assise de profil II. Mougins. 23-January/1966. Pen & ink on paper. [46] 46,2 x 55 cm. Evelyn Aimis Fine Art, Miami. 2012. Formerly Sotheby's. #321, L12007, 06/20/12.

OPP.66:059; PP.66:003; Z.XXV:200



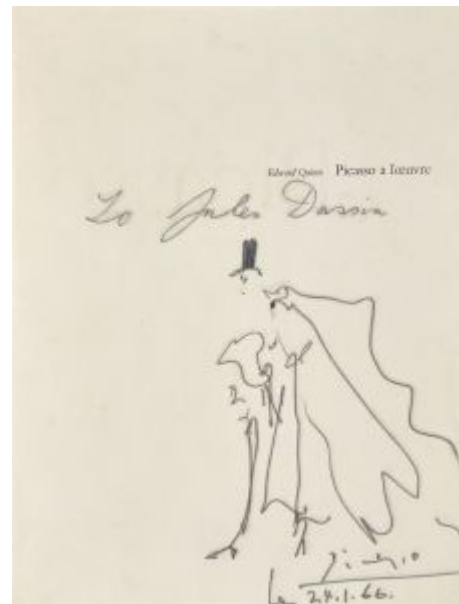


Personnages I. Mougins. 23-January/1966. India ink. 46 x 54,8 cm. Private collection.

OPP.66:060; PP.66:002; Z.XXV:198

Les mariés (À Jules Dassin). Mougins. 24-January/1966. Felt-tip pen on front page of the book *Picasso à l'oeuvre*. 32,5 x 24,5 cm. Artcurial. #147, 4172, 03/29/22.

OPP.66:350





Portrait d'homme. Mougins. 31-January/1966. Blue ink on book cover. [27 x 21] 27,1 x 20,8 cm. Artcurial. #426, 1765, 11/03/09. Formerly Christie's. #0133, 5485, 12/03/07.

OPP.66:100

Portrait de Édouard Pignon. Mougins. 16-February/1966. Linoleum cut on wove paper, edition 150. 44,5 x 38,1 cm. Sotheby's. #410, N07717, 11/02/01.

OPP.66:012; B.I:1230; Ba:1848; GC:134





Le prince Carnaval. Mougins. 16-February/1966. Colored crayon on paper (Reproduced in Le Patriote no. 45, 02/22/66). 54,6 x 45,7 cm. Sotheby's. #345, N08090, 05/04/05.

OPP.66:033; PP.66:004; Z.XXV:194

Portrait d'homme. Mougins. 16-February/1966. Linoleum cut. 34 x 27,9 cm. Sotheby's. #158, L19164, 10/17/19. Formerly Marina Picasso Collection.

OPP.66:401; Ba:1848.A





Picasso Salue Carnaval. Mougins. Post-16-February/1966. Print (Published in Le Patriote no. 45, 02/22/66) [After *Le prince Carnaval*]. S/U. Private collection.

OPP.66:233; GA.14:148p

La provence. Mougins. 19-February/1966. Black pencil. 24 x 31,5 cm. Private collection. Formerly Sotheby's. #211, 03/29/00.

OPP.66:366; PP.66:005



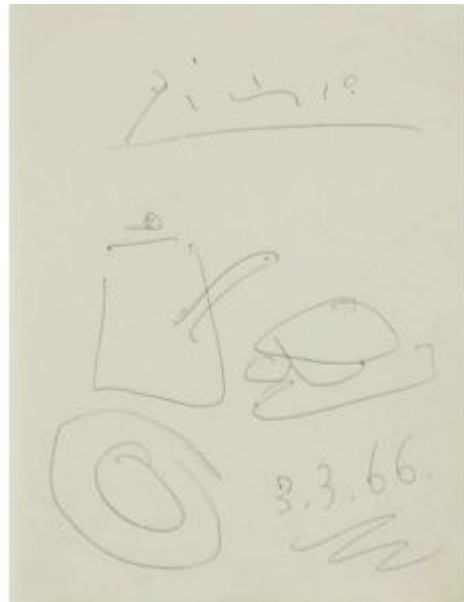


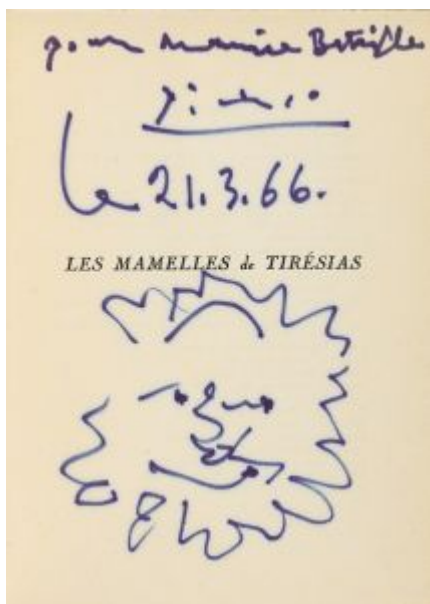
Bouquet pour Jacqueline Picasso. Mougins. 24-February/1966. Color crayon on cream wove paper. 33 x 25,4 cm. Galerie Michael, Beverly Hills, CA. 2011.

OPP.66:168

Nature morte. Mougins. 3-March/1966. Ink on paper. 28,5 x 14 cm. Gormleys Fine Art, Belfast & Dublin.

OPP.66:359





Tête de faune (À Maurice Bataille). Mougins. 21-March/1966. Blue ink. 19,6 x 14,4 cm. Sotheby's. #134, PF1203, 05/15/12.

OPP.66:175



Le barbu (Pour Remi Verger). Mougins. 22-March/1966. Felt-tip pen on paper. 17,4 x 15,3 cm. Artcurial. #3, 3164, 04/05/17.

OPP.66:254

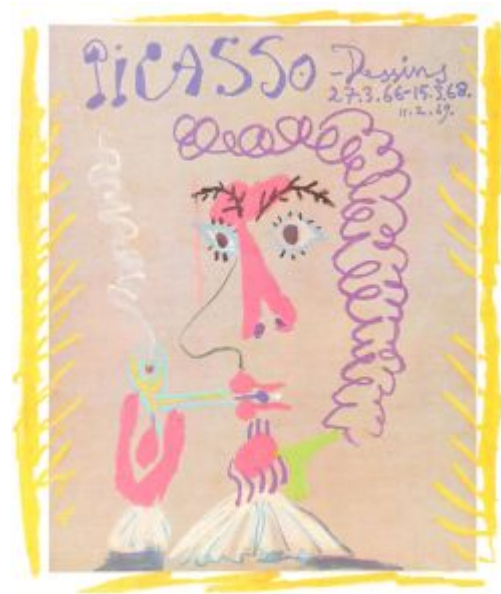


Homme nu couché. Mougins. 27-March/1966.
Pencil on paper. 27,2 x 50,7 cm. The Hirshhorn
Museum and Sculpture Garden, Smithsonian
Institution, Washington, DC. (Inv 86.3807). Joseph
H. Hirshhorn Bequest, 1988.

OPP.66:046; PP.66:006; Z.XXV:209; UW.93*:41

Fumeur. Mougins. 27-March/1966, 15-March/1968,
11-February/1969. Color crayons & gouache on
paper. 28,3 x 27,5 cm. Private collection.

OPP.66:223





Visage d'homme barbu. Mougins. 29-March/1966. Ink felt-tip pen on page of Edward Quinn, *Picasso à l'oeuvre*, 1965. 33 x 25 cm. Museo Picasso, Colección Eugenio Arias, Buitrago del Lozoya. (Inv 15).

OPP.66:083; JR.90:15

Tête d'homme I. Mougins. 31-March/1966. Pastel & colored wax crayons on board. [31 x 23,5] [31 x 24] 31,4 x 23,7 cm. Christie's. #127, 14185, 05/16/17. Formerly Christie's. #133, 10379, 06/24/15; Christie's. #133, 2438, 05/05/11; Christie's. #601, 6062, 12/09/98; Private collection. Courtesy Rex Irwin Gallery, Sydney.

OPP.66:011; AU.89*:62





Visage II. Mougins. 31-March/1966. Color wax crayons [OIC]. 24 x 31 cm. Private collection. Formerly Christie's. #133.2, 05/11/95.

OPP.66:367; PP.66:007



Visage III. Mougins. 31-March/1966. Color wax crayons [OIC]. 24 x 31 cm. Private collection. Formerly Christie's. #133.3, 05/11/95.

OPP.66:368; PP.66:008



Visage IV. Mougins. 31-March/1966. Felt-tip pen & color wax crayons [OiC]. 24 x 31 cm. Private collection. Formerly Christie's. #133.4, 05/11/95.

OPP.66:369; PP.66:009

Deux personnages V. Mougins. 31-March/1966. Felt-tip pen & color wax crayons [OiC]. 24 x 31 cm. Private collection. Formerly Christie's. #133.6, 05/11/95.

OPP.66:370; PP.66:010





Deux personnages et un chat VI. Mougins. 31-March/1966. Felt-tip pen & color wax crayons [OIC]. 24 x 31 cm. Private collection. Formerly Christie's. #133.7, 05/11/95.

OPP.66:371; PP.66:011

Visage d'homme VII. Mougins. 31-March/1966. Felt-tip pen & color wax crayons [OIC]. 24 x 31 cm. Private collection. Formerly Christie's. #133.9, 05/11/95.

OPP.66:372; PP.66:012





Trois personnages masculins VIII. Mougins. 31-March/1966. Felt-tip pen [OIC]. 24 x 31 cm. Private collection. Formerly Christie's. #133.8, 05/11/95.

OPP.66:373; PP.66:013

Visage. Mougins. 1-April/1966. Color wax crayons [OIC]. 24 x 31 cm. Private collection. Formerly Christie's. #133.10, 05/11/95.

OPP.66:374; PP.66:014





Visage d'homme II. Mougins. 1-April/1966. Felt-tip pen [OïC]. 24 x 31 cm. Private collection. Formerly Christie's. #133.11, 05/11/95.

OPP.66:375; PP.66:015



Visage d'homme barbu III. Mougins. 1-April/1966. Felt-tip pen & color wax crayons [OïC]. 24 x 31 cm. Private collection. Formerly Christie's. #133.12, 05/11/95.

OPP.66:376; PP.66:016



Visage d'homme IV. Mougins. 1-April/1966. Felt-tip pen & color wax crayons [OIC]. 31 x 24 cm. Private collection. Formerly Christie's. #133.13, 05/11/95.

OPP.66:377; PP.66:017

Portrait d'Edouard Pignon II. Mougins. 2-April/1966. Wax crayon on paper. 30,5 x 24,2 cm. Christie's. #121, 1533, 06/25/14.

OPP.66:211





Portrait d'Édouard Pignon au cigare III (Pour Monsieur et Madame Pignon). Mougins. 2-April/1966. Wax crayon & felt-tip pen on paper. 30,5 x 23,9 cm. Galeria Mayoral, Barcelona. Formerly Christie's. #227, 13664, 03/23/17.

OPP.66:251

Étude de personnages. Mougins. 2-April/1966. Felt-tip pen & color wax crayons [Oic]. 24 x 31 cm. Private collection. Formerly Christie's. #133.5, 05/11/95.

OPP.66:378; PP.66:018





Deux personnages I. Mougins. 5-April/1966.
Felt-tip pen [OïC]. 24 x 31 cm. Private collection.
Formerly Christie's. #133.14, 05/11/95.

OPP.66:379; PP.66:019



Deux personnages masculins II.
Mougins. 5-April/1966. Felt-tip pen [OïC].
24 x 31 cm. Private collection. Formerly
Christie's. #133.15, 05/11/95.

OPP.66:380; PP.66:020



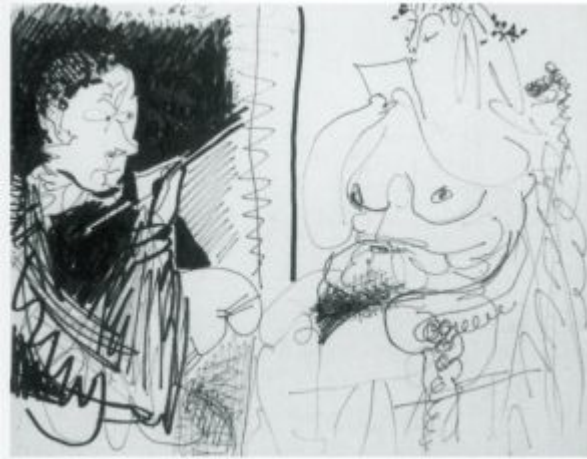
Deux têtes d'hommes III. Mougins. 5-April/1966. Felt-tip pen [OïC]. 24 x 31 cm. Private collection. Formerly Christie's. #133.16, 05/11/95.

OPP.66:381; PP.66:021

Trois personnages I. Mougins. 10-April/1966. Felt-tip pen [OïC]. 24 x 31 cm. Private collection. Formerly Christie's. #133.17, 05/11/95.

OPP.66:382; PP.66:022





Peintre et modèle II. Mougins. 10-Avril/1966.
Felt-tip pen [OïC]. 24 x 31 cm. Private collection.
Formerly Christie's. #133.18, 05/11/95.

OPP.66:383; PP.66:023

Peintre et modèle III. Mougins. 10-
Avril/1966. Felt-tip pen [OïC]. 24 x 31 cm.
Private collection. Formerly Christie's.
#133.19, 05/11/95.

OPP.66:384; PP.66:024





Homme et musicienne assise VII. Mougins. 11-April/1966. India ink & color pencil on paper. 37 x 53,5 [54] cm. Galerie Fabien Boulakia. 2013. Formerly Hammer Galleries.

OPP.66:141; PP.66:030; Z.XXV:203;
BS.81*:101; BS.84c*:75; BS.86a*:83;
BS.86a*:83; GS.83*:24; NY.12b*:n/a; RD.11*:48

Trois personnages et tête de profil V. Mougins. 11-April/1966. Black felt-tip pen on paper. 36,8 x 53,3 cm. Christie's. #7, 12146, 11/17/16.

OPP.66:244; PP.66:028; Z.XXV:201;
RH.90*:39p





Trois hommes assis VI. Mougins. 11-April/1966.
India ink on paper [Obverse of *Tête d'homme I*].
37 x 53,5 cm. Private collection.

OPP.66:293; PP.66:029; Z.XXV:199

Deux personnages I. Mougins. 11-
April/1966. Felt-tip pen & color wax
crayons [Oic]. 24 x 31 cm. Private
collection. Formerly Christie's. #133.20,
05/11/95.

OPP.66:385; PP.66:025





Trois hommes et une femme II. Mougins. 11-April/1966. Felt-tip pen & color wax crayons [OIC]. 24 x 31 cm. Private collection. Formerly Christie's. #133.21, 05/11/95.

OPP.66:386; PP.66:026

Trois personnages masculins en compagnie d'un coq III. Mougins. 11-April/1966. Felt-tip pen [OIC]. 24 x 31 cm. Private collection. Formerly Christie's. #133.1, 05/11/95.

OPP.66:387; PP.66:027





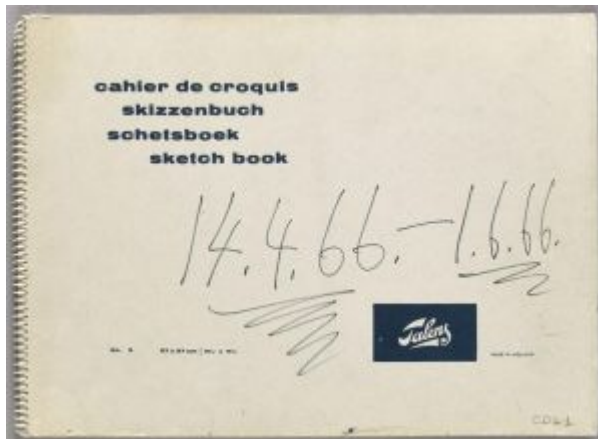
Étude d'après Jupiter et Thétis d'Ingres XV. Mougins. 14-April/1966. Felt-tip pen on paper. 37 x 27 cm. Musée Picasso, Paris. Jacqueline Roque Picasso Collection. Dation 1990.

OPP.66:274; MPP:1990.116.16r; PP.66:045; BL.96:58.16r

Tête d'homme barbu. Mougins. 14-April~24-July/1966. Felt-tip pen, color pencil & wax crayon. 27 x 37 cm. Musée Picasso, Paris. Jacqueline Roque Picasso Collection. Dation 1990.

OPP.66:230; MPP:1990.116.01r; PP.66:082; BL.96:58.01r; GR.90*:113





1ère de couverture: Inscription. Mougins. 14-April~24-July/1966. Pencil on paper. 27 x 37 cm. Musée Picasso, Paris. Jacqueline Roque Picasso Collection. Dation 1990.

OPP.66:246; MPP:1990.116.c1; BL.96:58.c1; GR.90*:113

2ème de couverture: Page de publicité. Mougins. 14-April~24-July/1966. Felt-tip pen on paper. 37 x 27 cm. Musée Picasso, Paris. Jacqueline Roque Picasso Collection. Dation 1990.

OPP.66:261; MPP:1990.116.c2; BL.96:58.c2





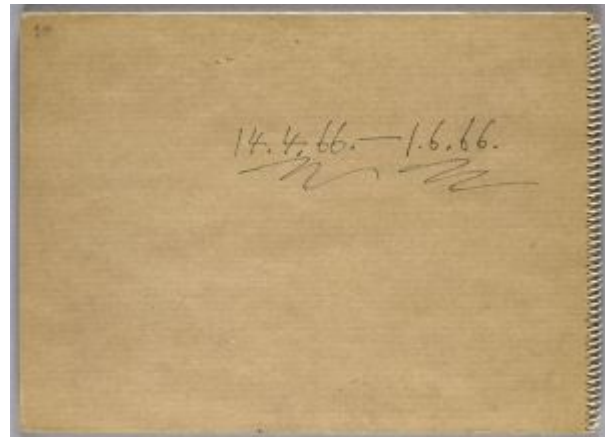
Le peintre et son modèle. Mougins. 14-April~24-July/1966.
Felt-tip pen on paper. 37 x 27 cm. Musée Picasso, Paris.
Jacqueline Roque Picasso Collection. Dation 1990.

OPP.66:262; MPP:1990.116.03r; PP.66:035; BL.96:58.3r

4ème de couverture: Inscription.

Mougins. 14-April~24-July/1966. Felt-tip pen on paper. 37 x 27 cm. Musée Picasso, Paris. Jacqueline Roque Picasso Collection. Dation 1990.

OPP.66:263; MPP:1990.116.c4;
BL.96:58.c4





Personnage debout. Mougins. 18-April/1966. Fel-tip pen (Used as cover for Picasso: deux époques: peintures 1960-1965 et des années 1934, 1937, 1944). 24,3 x 10 cm. Private collection.

OPP.66:242; PP.66:031; Z.XXV:196; GR.73:38p; LC.66*:c

Tête d'homme III. Mougins. 21-April/1966. Ink & wash on paper [Reverse of *Homme nu debout et trois têtes II*]. [61 x 49,5] 60,7 x 49,8 cm. Sotheby's. #336, N08438, 05/08/08. Formerly Sotheby's. #387, 7050, 11/13/97.

OPP.66:111; PP.66:032; Z.XXV:197





Tête (Pour Leila). Mougins. 21-April/1966. Ink on the book Hélène Parmelin, *Le Peintre et son modèle*. 30 x 27,3 cm. Christie's. #199, 3504, 05/11/12. Formerly David Douglas Duncan Collection.

OPP.66:126

Buste d'homme I. Mougins. 21-April~23-July/1966. Color pencils on paper [OiC]. 61 x 50 cm. Private collection.

OPP.66:291; PP.66:083; Z.XXV:193





Homme nu debout et trois têtes II. Mougins. 21-April~19-September/1966. Brown crayon & pencil on paper [Obverse of *Tête d'homme III*]. [61 x 49,5] 60,7 x 49,8 cm. Sotheby's. #202, N08588, 11/05/09. Formerly Sotheby's. #141, L08009, 06/26/08; Sotheby's. #510, L04006, 02/04/04.

OPP.66:025; PP.66:087; Z.XXV:207; OS.04*:n/a

Tête d'homme. Mougins. 22-April/1966. India ink & white chalk. 61 x 50 cm. Private collection.

OPP.66:292; PP.66:033; Z.XXV:195





Étude d'après Jupiter et Thétis d'Ingres XVII. Mougins. 24-April/1966. Crayon [felt-tip pen]. 27 x 37 cm. Musée Picasso, Paris. Jacqueline Roque Picasso Collection. Dation 1990.

OPP.66:103; MPP:1990.116.18r; PP.66:047; BL.96:58.18r; GR.90*:113

Étude d'après Jupiter et Thétis d'Ingres XIV.

Mougins. 24-April/1966. Felt-tip pen on paper. 27 x 37 cm. Musée Picasso, Paris. Jacqueline Roque Picasso Collection. Dation 1990.

OPP.66:129; MPP:1990.116.15r; PP.66:044; BL.96:58.15r; GR.90*:113





Femme à la canne et nu à sa toilette (VI). Mougins. 24-April/1966. Black felt-tip pen. 27 x 37 cm. Musée Picasso, Paris. Jacqueline Roque Picasso Collection. Dation 1990.

OPP.66:203; MPP:1990.116.07r; PP.66:037; BL.96:58.07r; GR.90*:113; JC.01a*:227a

Peintre sur le motif. Mougins. 24-April/1966. Felt-tip pen & wax crayons. 27 x 37 cm. Musée Picasso, Paris. Jacqueline Roque Picasso Collection. Dation 1990.

OPP.66:231; MPP:1990.116.02r; PP.66:034; BL.96:58.02r; GR.90*:113





Étude d'après Jupiter et Thétis d'Ingres IX. Mougins. 24-April/1966. Felt-tip pen on paper. 27 x 37 cm. Musée Picasso, Paris. Jacqueline Roque Picasso Collection. Dation 1990.

OPP.66:250; MPP:1990.116.10r; PP.66:039; BL.96:58.10r; GR.90*:113

Caricature: femme à la canne et plat de 'merde'
VIII. Mougins. 24-April/1966. Felt-tip pen on paper. 37 x 27 cm. Musée Picasso, Paris. Jacqueline Roque Picasso Collection. Dation 1990.

OPP.66:266; MPP:1990.116.09r; PP.66:038; BL.96:58.9r





Étude d'après Jupiter et Thétis d'Ingres XI. Mougins. 24-April/1966. Felt-tip pen on paper. 37 x 27 cm. Musée Picasso, Paris. Jacqueline Roque Picasso Collection. Dation 1990.

OPP.66:267; MPP:1990.116.12r; PP.66:041; BL.96:58.12r



Étude d'après Jupiter et Thétis d'Ingres XII. Mougins. 24-April/1966. Felt-tip pen on paper. 37 x 27 cm. Musée Picasso, Paris. Jacqueline Roque Picasso Collection. Dation 1990.

OPP.66:268; MPP:1990.116.13r; PP.66:042; BL.96:58..13r



Caricature: femme au chapeau, homme barbu et satyre couronné V. Mougins. 24-April/1966. Felt-tip pen on paper. 37 x 27 cm. Musée Picasso, Paris. Jacqueline Roque Picasso Collection. Dation 1990.

OPP.66:270; MPP:1990.116.06r; PP.66:036; BL.96:58.6r

Étude d'après Jupiter et Thétis d'Ingres X. Mougins. 24-April/1966. Felt-tip pen on paper. 37 x 27 cm. Musée Picasso, Paris. Jacqueline Roque Picasso Collection. Dation 1990.

OPP.66:272; MPP:1990.116.11r; PP.66:040; BL.96:58.11r





Étude d'après Jupiter et Thétis d'Ingres XIII. Mougins. 24-April/1966. Felt-tip pen on paper. 37 x 27 cm. Musée Picasso, Paris. Jacqueline Roque Picasso Collection. Dation 1990.

OPP.66:273; MPP:1990.116.14r; PP.66:043; BL.96:58.14r



Étude d'après Jupiter et Thétis d'Ingres XVI. Mougins. 24-April/1966. Felt-tip pen on paper. 37 x 27 cm. Musée Picasso, Paris. Jacqueline Roque Picasso Collection. Dation 1990.

OPP.66:275; MPP:1990.116.17r; PP.66:046; BL.96:58.17r



Caricature: femme au chapeau, homme et satyre IV.

Mougins. 24-April~16-May/1966. Felt-tip pen, color crayons & wax crayons on paper. 27 x 37 cm. Musée Picasso, Paris. Jacqueline Roque Picasso Collection. Dation 1990.

OPP.66:248; MPP:1990.116.05r; PP.66:051; BL.96:58.5r; GR.90*:113



Caricature: femme à la canne et satyre VIII. Mougins. 24-April~20-June/1966. Felt-tip pen, color crayons & wax crayons on paper. 27 x 37 cm. Musée Picasso, Paris. Jacqueline Roque Picasso Collection. Dation 1990.

OPP.66:249; MPP:1990.116.08r; PP.66:068; BL.96:58.8r; GR.90*:113



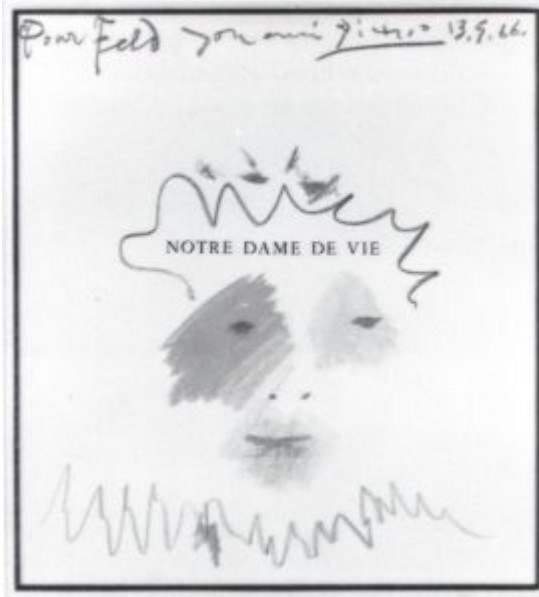
Caricature: femme au chapeau, homme et satyre. Mougins. 24-April~24-July/1966. Felt-tip pen, color pencil & wax crayon. 27 x 37 cm. Musée Picasso, Paris. Jacqueline Roque Picasso Collection. Dation 1990.

OPP.66:232; MPP:1990.116.04r; PP.66:067; BL.96:58.04r; GR.90*:113

Taureau (Para mi amigo Álvarez). Mougins. 9-May/1966. Crayons on wove paper. 24,6 x 17,8 cm. Sylvan Cole Gallery, Sitges.

OPP.66:360





Tête d'homme (Pour Feld). Mougins. 13-May/1966. Pastel on frontispiece of book Hélène Parmelin, Notre Dame de Vie. 29 x 26 cm. Rouillac. #512, 05/15/95.

OPP.66:222

Tête d'homme (Pour Milton Fox).. Mougins. 13-May/1966. Crayon on frontispiece of book Hélène Parmelin, Notre Dame de Vie. 29,8 x 27,3 cm. Hélène Bailly Gallery. 2018. Formerly Heritage Auctions New York. 2017.

OPP.66:256





Homme nu assis I. Mougins. 15-May/1966. Brown pencil on paper [Oic]. 61 x 50 cm. Private collection.

OPP.66:295; PP.66:048; Z.XXV:208



Homme nu assis II. Mougins. 15-May/1966. Brown pencil on paper [Oic]. 61 x 50 cm. Private collection.

OPP.66:296; PP.66:049; Z.XXV:210; GL.68a*:1



Homme à la coupe assis III. Mougins. 15-May/1966.
Pencil on paper. 61 x 50 cm. Private collection.

OPP.66:299; PP.66:050; Z.XXV:215; GL.68a*:2

Torse d'homme IV. Mougins. 16-May/1966. Pencil on
paper. 61 x 49,5 [50] cm. Waddington Galleries,
London. 2006.

OPP.66:029; PP.66:056; Z.XXV:214; LO.97*:n/a





Homme et femme assis. Mougins. 16-May/1966.
Pen, ink & pencil on paper. 37,1 x 53,7 cm.
Sotheby's. #309, N08790, 11/03/11.

OPP.66:172; PP.66:052; Z.XXV:206

Homme nu debout III. Mougins. 16-May/1966.
Crayon on paper. 61 x 50 cm. Farsetti Arte. #596,
168, 05/31/14.

OPP.66:210; PP.66:055; Z.XXV:213; GL.68a*:3;
MB.05*:198p





Homme nus assis I. Mougins. 16-May/1966. Brown pencil on paper [OIC]. 61 x 50 cm. Private collection.

OPP.66:297; PP.66:053; Z.XXV:211

Homme nu assis. Mougins. 16-May/1966. Pencil on paper. 61 x 50 cm. Private collection.

OPP.66:298; PP.66:054; Z.XXV:212





Visage d'homme barbu (Para mi amigo Arias).

Mougins. 24-May/1966. Felt-tip pen on paper (In Notre Dame de Vie. Secrets d'alcôve d'un atelier de Hélène Parmelin. Paris, Cercle d'Art, 1966). 30 x 27,5 cm. Museo Picasso, Colección Eugenio Arias, Buitrago del Lozoya. (Inv 22).

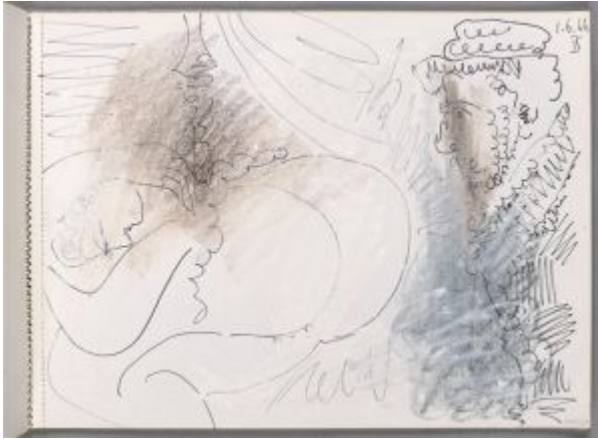
OPP.66:082; JR.90:22

Projet pour Pulcinella (Pour Boris).

Mougins. 28-May/1966. Red crayon on lithograph [After *Étude de décor pour le ballet Pulcinella*]. 33 x 25,5 cm. Sotheby's. #126, L07403, 06/20/07.

OPP.66:200





Nu observé par un vieillard (II). Mougins. 1-June/1966. Black felt-tip pen, soft lead & wax crayons on Ingres paper. 27 x 37 cm. Musée Picasso, Paris. Jacqueline Roque Picasso Collection. Dation 1990.

OPP.66:205; MPP:1990.116.20r; PP.66:058; BL.96:58.20r; GR.90*:113; JC.01a*:227c

Buste d'homme au chapeau, vieil homme barbu III. Mougins. 1-June/1966. Felt-tip pen, soft lead & wax pencil. 27 x 37 cm. Musée Picasso, Paris. Jacqueline Roque Picasso Collection. Dation 1990.

OPP.66:220; MPP:1990.116.20v; PP.66:059; BL.96:58.20v; GR.90*:113





Caricature: le peintre et son modèle V.

Mougins. 1-June/1966. Felt-tip pen on paper. 37 x 27 cm. Musée Picasso, Paris. Jacqueline Roque Picasso Collection. Dation 1990.

OPP.66:269; MPP:1990.116.22r; PP.66:061; BL.96:58.22r

Caricatures: femme nue et satyres IV.
Mougins. 1-June/1966. Felt-tip pen on paper. 27 x 37 cm. Musée Picasso, Paris. Jacqueline Roque Picasso Collection. Dation 1990.

OPP.66:276; MPP:1990.116.21r; PP.66:060; BL.96:58.21r





Nu et satyre VI. Mougins. 1-June/1966. Felt-tip pen on paper. 27 x 37 cm. Musée Picasso, Paris. Jacqueline Roque Picasso Collection. Dation 1990.

OPP.66:277; MPP:1990.116.23r; PP.66:062; BL.96:58.23r

Nu observé par un vieillard (I).
Mougins. 1-June/1966. Black felt-tip pen & soft lead pencil. 27 x 37 cm. Musée Picasso, Paris. Jacqueline Roque Picasso Collection. Dation 1990.

OPP.66:204; MPP:1990.116.19r;
PP.66:057; BL.96:58.19r; GR.90*:113;
JC.01a*:227b





Tête d'homme I. Mougins. 8-June/1966. Color pencils on paper [OIC] [Reverse of *Trois hommes assis VI*]. 53,5 x 37 cm. Private collection.

OPP.66:294; PP.66:063; Z.XXV:204



Tête d'homme III. Mougins. 8-June/1966. Color pencil [OIC]. 53,5 x 37 cm. Private collection.

OPP.66:388; PP.66:063b



Tête d'homme II. Mougins. 8-June/1966. Color pencil [OïC]. 53,5 x 37 cm. Private collection.

OPP.66:391; PP.66:063a

Tête d'homme. Mougins. 9-June/1966. Colored crayons & pencil on paper. 53,5 x 37 cm. Sotheby's. #128, L16004, 02/04/16.

OPP.66:241; PP.66:064; Z.XXV:205





Trois têtes II. Mougins. 14-June/1966. Pencil on paper [Reverse of *Femme nue couchée*]. 26,5 x 50,5 cm. Private collection.

OPP.66:289; PP.66:066; Z.XXV:175

Femme nue couchée. Mougins. 14-June/1966. Color pencil on paper [Obverse of *Trois têtes II*]. 26,5 x 50,5 cm. Private collection.

OPP.66:290; PP.66:065; Z.XXV:176





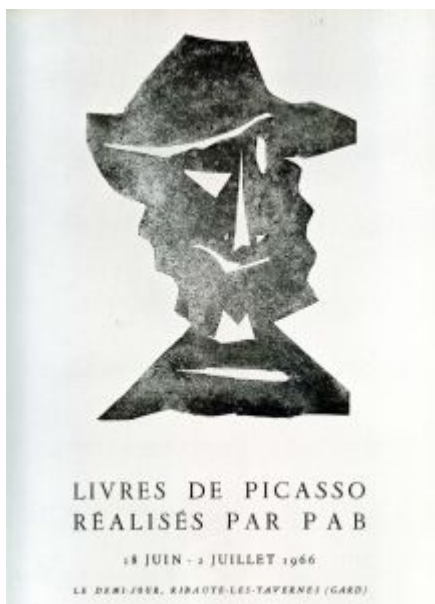
Personnage (Pour mon ami Nesjar). Mougins. 16-June/1966. Felt-tip pen on paper; frontispiece. 33 x 25 cm. Sotheby's. 10/13/22.

OPP.66:361

Les déjeuners (Este dibujo es para Rafael Alberti y su señora que bien se lo merece). Mougins. 16-June/1966. Ink. S/U. Private collection.

OPP.66:071; RA.92:22-23p





Livres de Picasso réalisés par PAB. Mougins. 18-June~2-July/1966. Woodcut in brown on wove [After *Homme au chapeau* (*Pierre-André Benoit, Alors*)]. 45,3 x 28,3 cm. Private collection.

OPP.66:199; MG.00:54

Caricatures de trois têtes d'homme de profil. Mougins. 20-June/1966. Felt-tip pen on paper. 37 x 27 cm. Musée Picasso, Paris. Jacqueline Roque Picasso Collection. Dation 1990.

OPP.66:264; MPP:1990.116.04v; PP.66:069; BL.96:58.4v





Profil d'homme et silhouette féminine. Mougins. 20-June/1966. Felt-tip pen on paper. 37 x 27 cm. Musée Picasso, Paris. Jacqueline Roque Picasso Collection. Dation 1990.

OPP.66:265; MPP:1990.116.07v; PP.66:071; BL.96:58.7v



Caricature: couple de vieillards et satyre lauré. Mougins. 20-June/1966. Felt-tip pen on paper. 37 x 27 cm. Musée Picasso, Paris. Jacqueline Roque Picasso Collection. Dation 1990.

OPP.66:271; MPP:1990.116.06v; PP.66:070; BL.96:58.6v



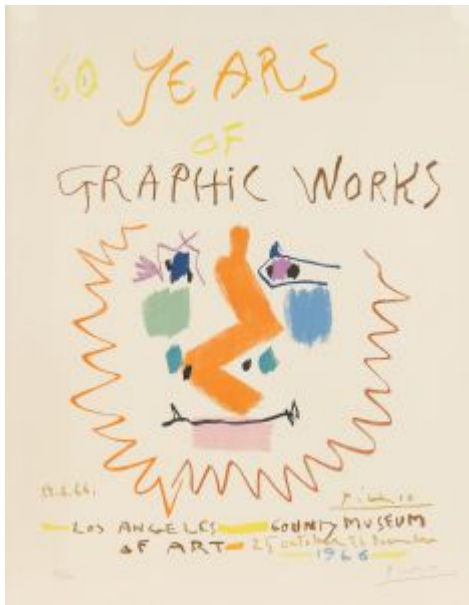
Tête de faune (Pour mon ami Remi). Mougins. 22-June/1966. Crayolor on paper. 30,7 x 12,1 cm. Artcurial. #1, 3164, 04/05/17.

OPP.66:252

Tête de faune (Pour Florent). Mougins. 22-June/1965. Crayolor on paper. 30,8 x 24 cm. Artcurial. #2, 3164, 04/05/17.

OPP.66:253





60 Years of Graphics Works. Mougins. 24-June/1966. Lithograph on wove, edition 2500. 74 x 51 cm. Christie's. #348, 1322, 04/28/03.

OPP.66:014; B.I:1302; M:406; GM.81*:347; MG.00:58

Veil homme et femme nue II. Mougins. 26-June/1966. Pencil on paper. 37 x 54 cm. Mr. and Mrs. Rafael López Cambil Collection, NY.

OPP.66:234; PP.66:073; WS.93*:149





3ème de couverture: Tête d'homme barbu. Mougins. 26-June/1966. Wax crayons & pastel on paper. 27 x 37 cm. Musée Picasso, Paris. Jacqueline Roque Picasso Collection. Dation 1990.

OPP.66:247; MPP:1990.116.c3; PP.66:072; BL.96:58.; GR.90*:113.c3

Femme nue couchée II. Mougins. 1-July/1966. Brown pencil. 37 x 54 cm. Private collection.

OPP.66:186; PP.66:074; Z.XXV:217; RD.96*:77





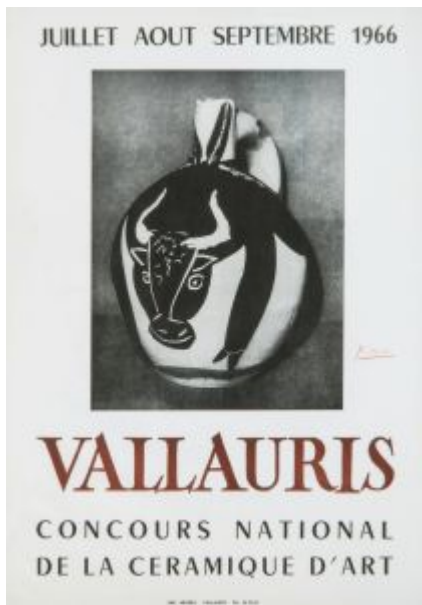
Deux femmes nues assises I. Mougins. 1-July/1966. Pencil on paper. 37 x 54 cm. Private collection.

OPP.66:300; PP.66:073b; Z.XXV:216;
BS.81*:102; BS.86a*:84; VI.81*:82

Femme nue couchée III. Mougins. 1-July/1966. Brown pencil on paper [OiC]. 37 x 54 cm. Private collection.

OPP.66:301; PP.66:075; Z.XXV:218





Concours National de la Céramique d'Art - Juillet Aout September 1966. Vallauris. July~September/1966. Poster. 75,5 x 54,5 cm. Private collection.

OPP.66:243

Femme nue assise et enfant musicien
I. Mougins. 2-July/1966. Brown pencil on paper [OïC]. 37 x 54 cm. Private collection.

OPP.66:302; PP.66:076; Z.XXV:219;
BS.81*:104; VI.81*:84





Homme et femme nus II. Mougins. 2-July/1966.
Brown pencil [OIC]. 37 x 54 cm. Private collection.

OPP.66:392; PP.66:076b

Homme agenouillé devant une femme nue III. Mougins. 2~3-July/1966. Crayon on paper. 49,8 x 61 cm. Museum Ludwig, Köln. (Inv ML/Z 1994/053). Schenkung 1994. Formerly Galerie Berggruen, Paris.

OPP.66:163; PP.66:076c; WO.92*:83





Deux femmes nues. Mougins. 3, 10-July [~5-October]/1966. Color pencil & pastel [gouache] on paper. [50] 49,5 x 61 cm. Sotheby's. #12, N08587, 11/04/09. Formerly Marina Picasso Collection.

OPP.66:128; PP.66:088b; JH.88*:8; JL.66*:202; NY.83b*:73; RH.92a*:n/a

Couple et homme à la pipe II. Mougins. 6-July/1966. Color pencil, chalk & graphite pencil on paper. 50 x 61 cm. Musée Picasso, Paris. Dation 1979.

OPP.66:104; MPP:1538; PP.66:077b; MA.08a*:n/a; PD.06*:281p; PP.20*:284; SP.04*:n/a



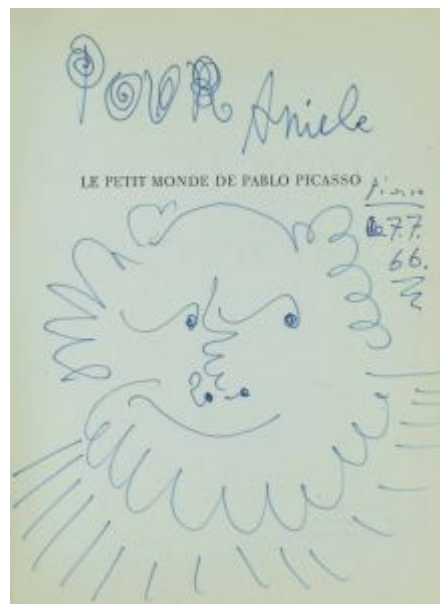


La femme et le singe I. Mougins. 6-July/1966. Pencil on paper. 51 x 60 cm. Catherine Hutin-Blay Collection, Paris. Formerly Jacqueline Roque Picasso Collection. (Inv 6264).

OPP.66:140; PP.66:077; BA.90a*:71; CP.95:168p; GL.81*:11s; JL.66*:n/a; MA.91a*:83; MR.03*:169p; PD.19*:93

Buste d'homme (Pour Aniele). Mougins. 7-July/1966. Crayon on cover of book David Douglas Duncan, Le Petit monde de Pablo Picasso. 28 x 21,5 cm. Christie's. #117, 4039, 12/02/15.

OPP.66:240





Homme, femme et enfant I. Mougins. 11-
July/1966. Color pencil [Oic]. 50 x 61 cm. Private
collection.

OPP.66:393; PP.66:077c

Trois personnages II. Mougins. 11~22-
July/1966. Color pencils on paper. 50 x 61
cm. Beck and Eggeling International Fine
Art.

OPP.66:304; PP.66:079; Z.XXV:222





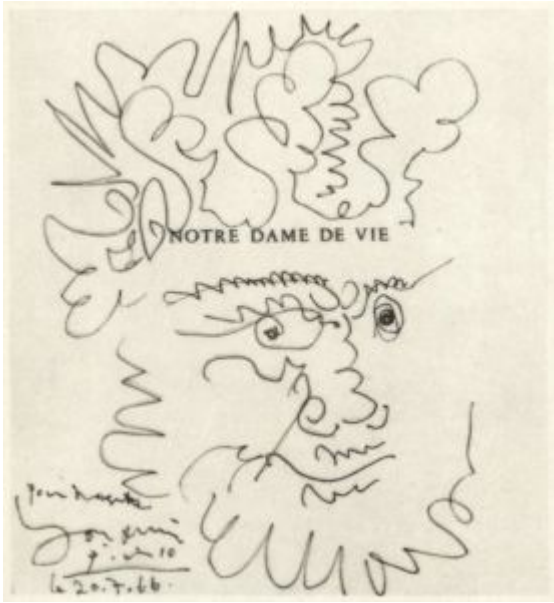
Tête d'homme barbu. Mougins. 20-July/1966. Pencil on paper. 30 x 26,5 cm. Private collection.

OPP.66:286; PP.66:078; Z.XXV:168

Tête de taureau. Mougins. 20-July/1966. India ink on paper. 30 x 26,5 cm. Private collection.

OPP.66:287; PP.65:176; Z.XXV:171



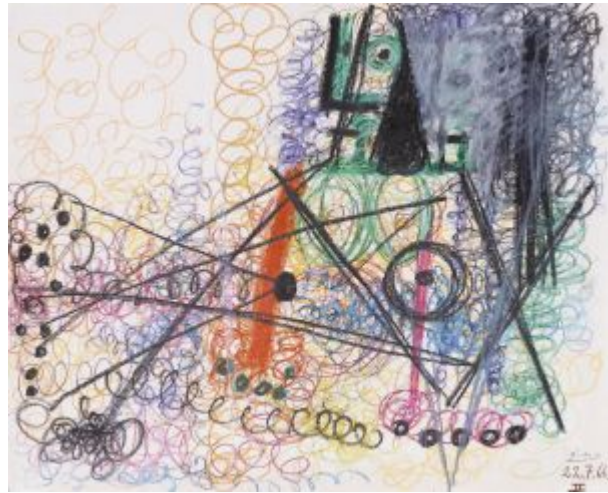


Tête d'homme barbu. Mougins. 20-July/1966. India ink on paper. 30 x 26,5 cm. Private collection.

OPP.66:288; PP.65:177; Z.XXV:172

Femme nue couchée II. Mougins. 22-July/1966. Wax crayon on paper. 49,3 x 61 cm. Christie's. #118, 2511, 11/24-25/08. Formerly Christie's. #213, 7601, 06/25/08.

OPP.66:120; PP.66:081; Z.XXV:221



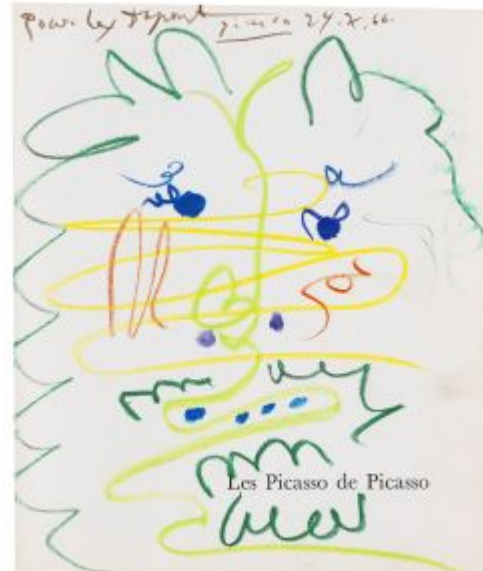


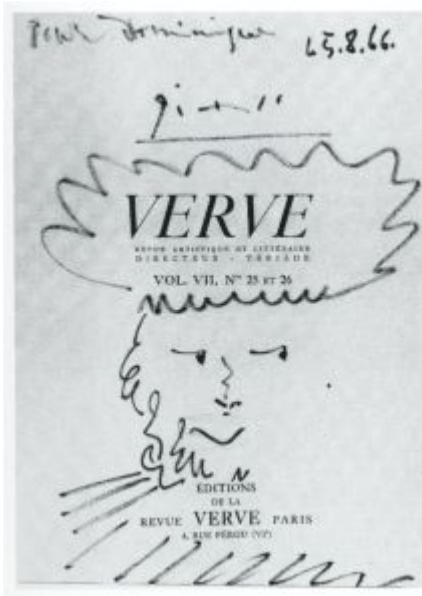
Femme nue couchée I. Mougins. 22-July/1966. Color pencils on paper [OïC]. 50 x 61 cm. Private collection.

OPP.66:303; PP.66:080; Z.XXV:220

Tête d'homme (Pour Le Dupont). Mougins. 24-July/1966. Colored wax crayons on titlepage, David Douglas Duncan, Les Picasso de Picasso. 29,5 x 24,5 cm. Christie's. #214, 14818, 09/24/17. Formerly Omer Tiroche Collection; Van Ham Kunstauktionen. #95, 344, 11/27/14; Ketterer Kunst. #384, 409, 12/06/13.

OPP.66:207





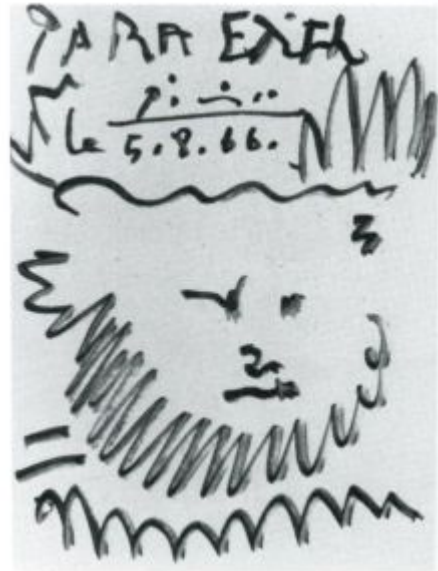
Femme au chapeau (Pour Dominique). Mougins. 5-August/1966. Felt-tip pen [Oic]. 35,5 x 26,7 cm. Private collection. Formerly Christie's. #122, 05/24/90.

OPP.66:394; PP.66:084

Tête d'homme avec une barbe (Para Edith).

Mougins. 5-August/1966. Felt-tip pen [Oic]. 23,5 x 18 cm. Private collection. Formerly Christie's. #214, 05/20/82.

OPP.66:395; PP.66:085



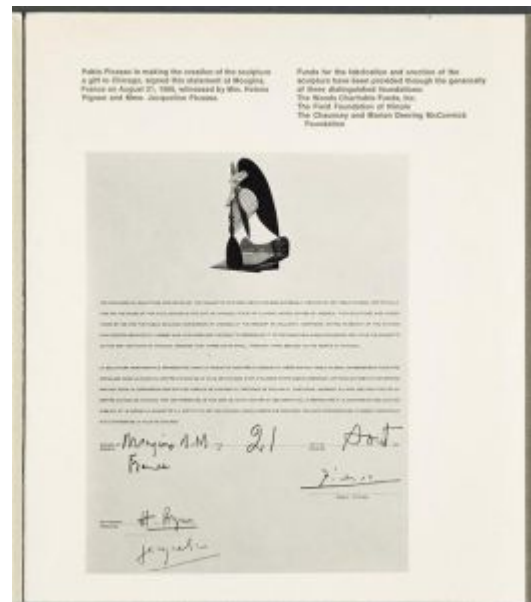


Pichet. Vallauris. 11-August/1966. Painted & glazed pitcher. 23 cm. Sotheby's. #726, W01402, 10/24/01.

OPP.66:016

Photographie du bon à tirer, jointe au livret du Monument. Mougins. 21-August/1966. Ink on paper [Obverse]. 25,5 x 20,5 cm. Musée Picasso, Paris. (Inv 515AP/C/60/15/4(1)).

OPP.66:283





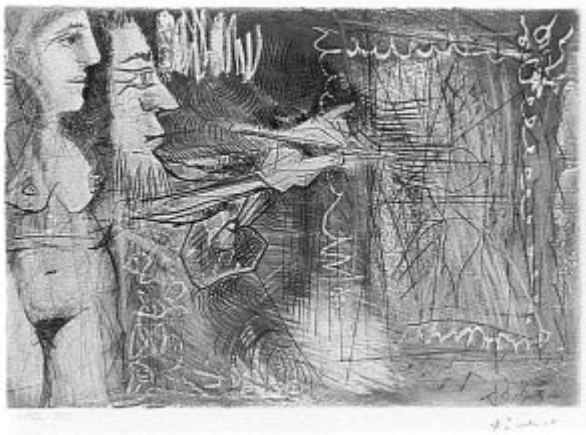
Tête d'homme (Pour Monsieur et Madame Barrioz).
Mougins. 26-August/1966. Color pencil [OIC]. 33 x 25 cm.
Private collection. Formerly Christie's. #135, 12/02/91.

OPP.66:396; PP.66:086

Peintre et sa toile. Mougins. 27-
August/1966. Burin, aquatint & scraping.
22,5 x 32,5 cm. Sotheby's. #137, N08740,
04/29/11.

OPP.66:166; B.II:1400; Ba:1372





Peintre et sa toile, avec une spectatrice nue de profil (V). Mougins. 27-August/1966. Burin, aquatint & scraping. 22,4 x 32,2 cm. Musée Picasso, Paris.

OPP.66:278; Ba:1372.5; MPP:1990.148

Tête (Pour Jacques Baron). Mougins. 29-August/1966. Green ink on Madoura Vallauris 1946-1966 page. 23,5 x 17,8 cm. Phillips. #124, NY030013, 04/29/13.

OPP.66:195





Peintre et modèle. Mougins. 29-August/1966.
Aquatint & etching. 22,5 x 32,5 cm. Bonhams.
#104, 23435, 10/18/16.

OPP.66:215; B.II:1401; Ba:1373; KK.93:49

Peintre et modèle.. Mougins. 30-
August/1966. Aquatint & etching. 22,5 x
32,5. Sotheby's. #572, PF2167, 10/19/21.

OPP.66:214; B.II:1402; Ba:1374;
KK.93:14





Peintre avec une toile représentant une femme nue debout. Mougins. 30-August/1966. Etching & aquatint. 22 x 32 cm. Sotheby's. #573, PF2167, 10/19/21.

OPP.66:327; B.II:1403; Ba:1375

L'atelier de l'artiste. Mougins. 31-August/1966. Aquatint with etching on wove paper, edition 50. [22,5 x 32,5] 22,1 x 32 cm. Sotheby's. #2QL0, L03405, 12/09/03.

OPP.66:027; B.II:1404; KK.93:42





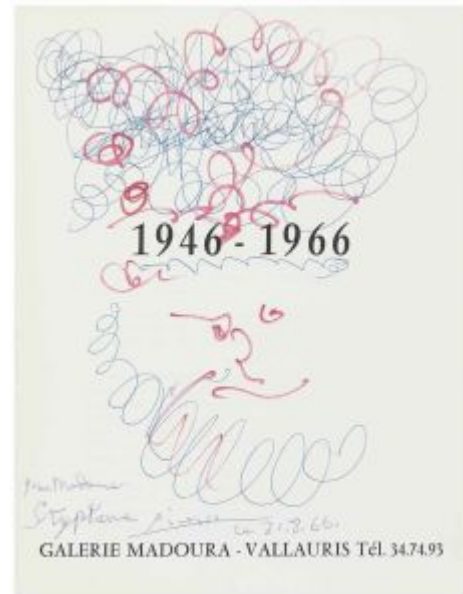
El Entierro del Conde de Orgaz L013 (L'atelier de l'artiste). Mougins. 31-August/1966. Aquatint. 45,5 x 36,5 cm. Sotheby's. #201, 05/18/10.

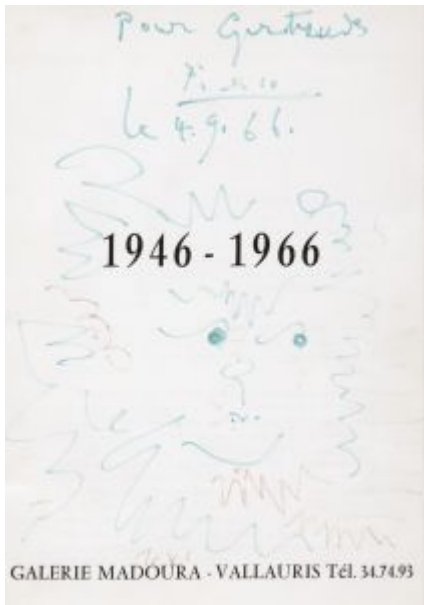
OPP.66:133; B.II:1478; GC:146.13

Tête de Rembrandt (Pour Madame Styptane).

Mougins. 31-August/1966. Blue ballpoint pen & red felt-tip marker on paper. 23,5 x 18,1 cm. Christie's. #225, 2555, 05/02/12. Formerly Christie's. #168, 2478, 11/02/11.

OPP.66:173



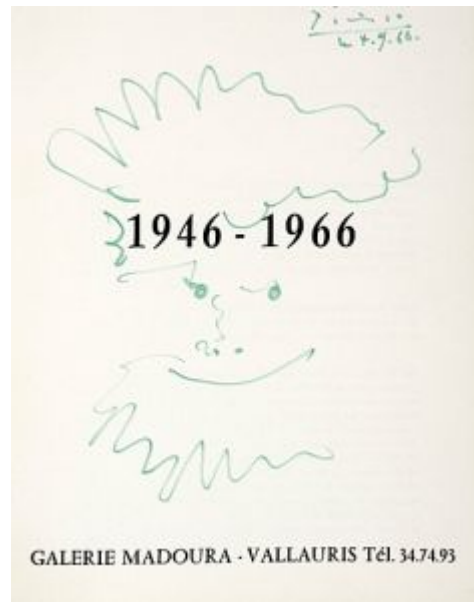


Tête de femme (Pour Gertrude). Mougins. 4-September/1966. Felt-tip pen & red ballpoint pen on title page of exhibition catalogue 20 ans de ceramique chez Madoura: 1946-1966. 50,8 x 45,7 cm. Private collection. Formerly Bonhams. #12, 19409, 11/07/11; Eleonore Austerer Gallery. 2006.

OPP.66:013

Homme barbu (Pour mon cher ami L.). Cannes. 4-September/1966. Green felt-tip pen on title page of exhibition catalogue 20 ans de ceramique chez Madoura: 1946-1966. 50,8 x 45,7 cm. Artcurial. #442, 1320, 11/26/07.

OPP.66:117





Tête de barbu (Pour mon ami Remi Verger). Mougins. 4-September/1966. Felt-tip pen on paper on title page of exhibition catalogue 20 ans de ceramique chez Madoura: 1946-1966. 23,3 x 18 cm. Artcurial. #8, 3164, 04/05/17.

OPP.66:255

Dans l'atelier I. Mougins. 5-September/1966. Etching & aquatint on BFK Rives, edition 50. 39,4 x 56,2 cm. Christie's. #177, 1292, 11/04/03.

OPP.66:023; B.I:1371; Ba:1392.IIBb2





Peintre et modèle. Mougins. 5-September/1966. Etching & aquatint, edition 50. [27,5 x 38,6] 28 x 39 cm. Christie's. #0344, 1830, 05/01/07.

OPP.66:081; B.I:1375; Ba:1396.Bb2; CH.04*:39

Peintre et modèle III. Mougins. 5-September/1966. Drypoint, edition 50. 28 x 39 cm. Denis Bloch Fine Art Ltd. 2008.

OPP.66:121; B.I:1373; Ba:1394.Bb2





Modèle et peintre chauve IV. Mougins. 5-September/1966. Drypoint & scraper. 27,6 x 38,7 cm. Sotheby's. #220, PF1334, 02/25/13.

OPP.66:187; B.I:1374; Ba:1395.Bb2

Peintre en demi-figure et modèle II.

Mougins. 5-September/1966. Etching & aquatint. 39,4 x 56,2 cm. Sotheby's. #221, PF1334, 02/25/13.

OPP.66:188; B.I:1372; Ba:1393.Bb2





Peintre et modèle. Mougins. 5-September/1966. Aquatint on BFK Rives, edition 50. 27,6 x 38,7 cm. Christie's. #182, 9942, 10/21/04.

OPP.66:201; B.I:1376; Ba:1397.Bb2; CH.04*:38

Tête d'homme barbu (Jean Cassou, Papiers collés 1910-1914). Mougins. 6-September/1966. Etching & aquatint, edition 100. [66,2 x 51,2; 57,7 x 45,2] 38,5 x 27,5 cm. Christie's. #253, 7096, 11/29/05.

OPP.66:053; B.I:1231; Ba:1398.B; GC:137



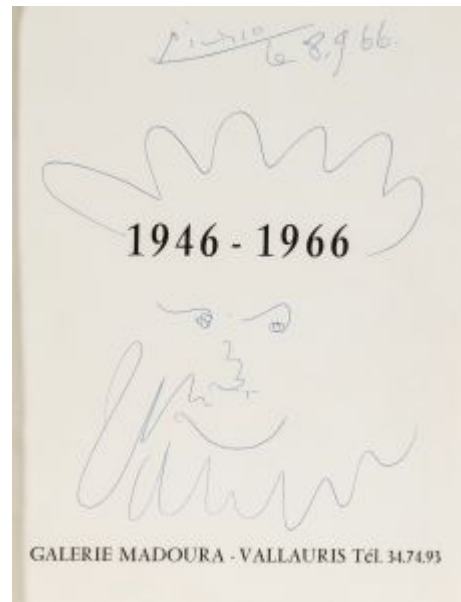


Tête d'homme barbu. Mougins. 6-September/1966. Etching & lithograph. 38,7 x 27,5 cm. Musée Picasso, Paris. Achat en vente publique en 2013 (Vente Hommage à Aldo Crommelynck).

OPP.66:344; Ba:1398; MPP:2013.1.6

Faune. Mougins. 8-September/1966. Ballpoint pen on half-title page of exhibition catalogue 20 ans de ceramique chez Madoura: 1946-1966. 23,5 x 18 cm. Sotheby's. #124, PF2303, 02/22/23.

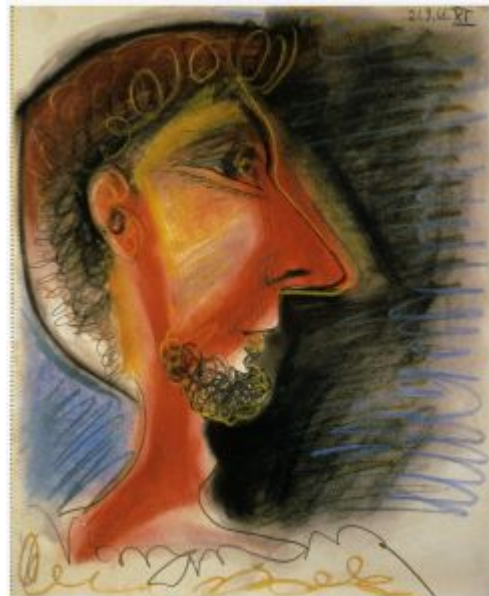
OPP.66:363





Portrait de Piero Crommelynck III. Mougins. 21-September/1966. Charcoal on paper. [60,5] 60 x 49,5 cm. Private collection.

OPP.66:137; PP.66:088; WR.96:26p; WS.07*:135



Portrait de Piero Crommelynck XI. Mougins. 21-September/1966. Charcoal on paper. 59 x 49 cm. Private collection.

OPP.66:138; WS.07*:136



Portrait de Piero Crommelynck IV. Mougins. 21-September/1966. Charcoal on paper. 60 x 49,5 cm. Private collection.

OPP.66:139; WS.07*:137; WS.11:374p

Portrait de Piero Crommelynck. Mougins. 21-September/1966. Engraving on linoleum. 64 x 53 cm. Private collection.

OPP.66:184; B.I:1367; Ba:1849; MM.11b*:8; WR.96:27p





Portrait de Pierre Crommelynck. Mougins. 22-September/1966. Etching & aquatint, edition 50. 38,5 x 27,5 cm. Christie's. #117, 2361, 09/20/11.

OPP.66:169; B.I:1377; Ba:1399



Portrait de Piero Crommelynck. Mougins. 23-September/1966. Etching & aquatint. 56 x 39,4 cm. Phillips. #168, UK030322, 09/14-15/22.

OPP.66:182; B.I:1378; Ba:1400; WR.96:27p

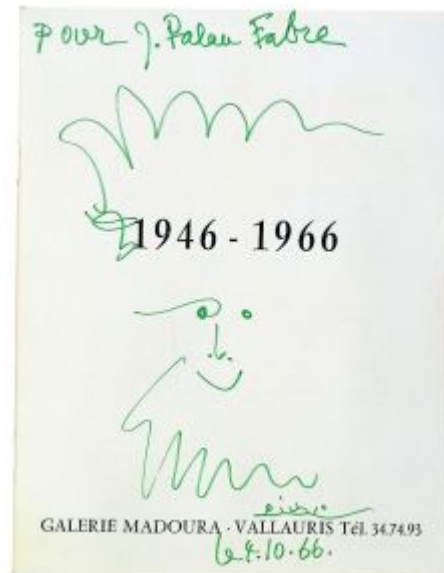


Tête de barbu (Pour Mireille). Mougins. 28-September/1966. Felt tip pen on title page of exhibition catalogue 20 ans de ceramique chez Madoura: 1946-1966. 23,5 x 18 cm. Hélène Bailly Gallery. 2018. Formerly Artcurial. #156, 3336, 11/18/17.

OPP.66:260

Visage (Pour Palau i Fabre). Mougins. 4-October/1966. Green felt-tip pen on glossy paper. 23,5 x 18 cm. Fundació Palau, Caldes d'Estrac. (Inv 0000415).

OPP.66:150





Tête d'homme barbu (Para Eugenio Arias).

Mougins. 16-October/1966. Ink & felt-tip pen (In Trozo de piel, 1960). 36 x 25,5 cm. Museo Picasso, Colección Eugenio Arias, Buitrago del Lozoya. (Inv 17).

OPP.66:084; JR.90:17

La fleur. Mougins. 16-October/1966. Ink & felt-tip pen on paper (In Trozo de piel, 1960). 36 x 25,5 cm. Museo Picasso, Colección Eugenio Arias, Buitrago del Lozoya. (Inv 18).

OPP.66:085





Tête d'homme (Para Eugenio Arias). Mougins. 16-October/1966. Ink & felt-tip pen on paper (In Trozo de piel, 1960). 36 x 25,5 cm. Museo Picasso, Colección Eugenio Arias, Buitrago del Lozoya. (Inv 19).

OPP.66:086

Tête d'homme. Mougins. 16-October/1966. Ink & felt-tip pen on paper (In Trozo de piel, 1960). 36 x 25,5 cm. Museo Picasso, Colección Eugenio Arias, Buitrago del Lozoya.

OPP.66:087





Portrait d'homme. Mougins. 16-October/1966. Ink & felt-tip pen on paper (In Trozo de piel, 1960). 36 x 25,5 cm. Museo Picasso, Colección Eugenio Arias, Buitrago del Lozoya.

OPP.66:088

Dessin. Mougins. 16-October/1966. Ink & felt-tip pen on paper (In Trozo de piel, 1960). 36 x 25,5 cm. Museo Picasso, Colección Eugenio Arias, Buitrago del Lozoya.

OPP.66:089





Tête d'homme barbu. Mougins. 16-October/1966. Ink & felt-tip pen on paper (In Trozo de piel, 1960). 36 x 25,5 cm. Museo Picasso, Colección Eugenio Arias, Buitrago del Lozoya.

OPP.66:090

Tête d'homme (Para Eugenio). Mougins. 16-October/1966. Ink & felt-tip pen on paper (In Trozo de piel, 1960). 36 x 25,5 cm. Museo Picasso, Colección Eugenio Arias, Buitrago del Lozoya.

OPP.66:091





La vieillesse: femme regardant trois profils de vieillards. Mougins. 17-October/1966. Etching & aquatint, Edition 50. 27,3 x 38,5 cm. Christie's. #0165, 5246, 11/29/07.

OPP.66:099; B.I:1379; Ba:1401.Bb2

Dans l'atelier II. Mougins. 17-October/1966. Etching & aquatint, edition 50. 39,5 x 56 cm. Museum Würth, Künzelsau. (Inv 4859). Also Christie's. #118, 2361, 09/20/11.

OPP.66:170; B.I:1380; Ba:1402.Bb2; RD.08*:144p



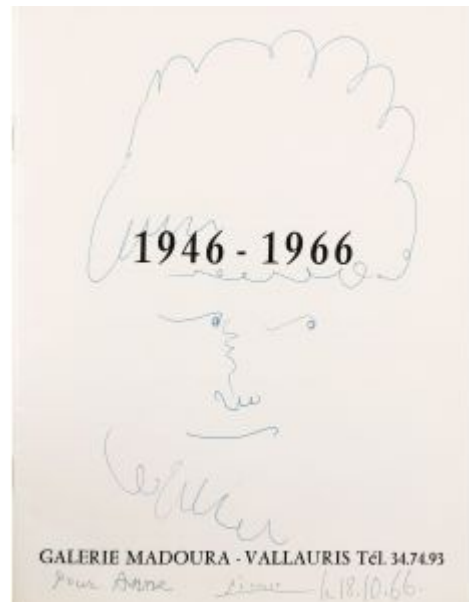


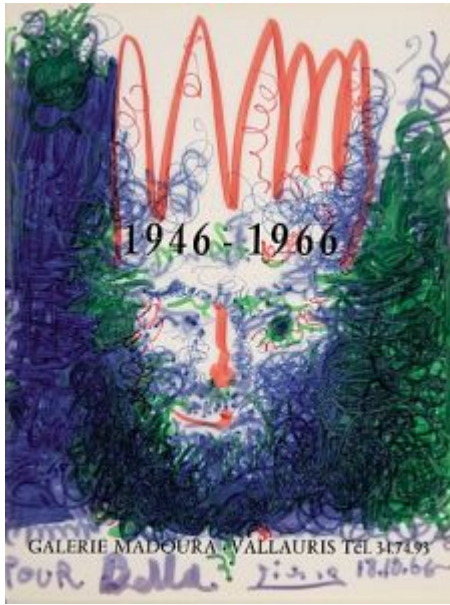
La vieillesse: Femme regardant trois profils de vieillards. Mougins. 17-October/1966. Aquatint, lithograph & etching. 27,5 x 38,6 cm. Musée Picasso, Paris. Achat en vente publique en 2013 (Vente Hommage à Aldo Crommelynck).

OPP.66:345; Ba:1401; MPP:2013.1.7

Portrait d'homme (Pour Anne). Mougins. 18-October/1966. Felt-tip pen on paper. 18 x 23,4 cm. Sotheby's. #143, PF7029, 12/13/07.

OPP.66:101





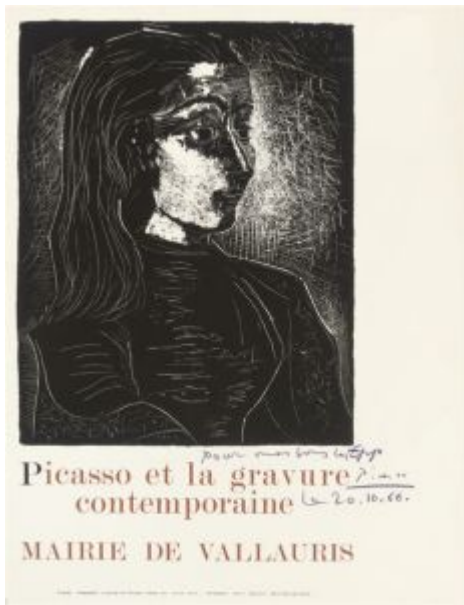
Visage de face (Pour Bella). Mougins. 18-October/1966. Blue ink & red & green felt-tip pen. S/U. Private collection. Formerly Artcurial. #112, 1131, 11/07/06.

OPP.66:113

Peintre et modèle I. Mougins. 20-October/1966. Aquatint on Rives, edition 50. [27 x 37,5] 27,5 x 38 cm. Christie's. #0247, 7570, 04/02/08.

OPP.66:105; B.I:1381; Ba:1403.Bb2; CH.04*:27





Picasso et la gravure contemporaine Mairie de Vallauris. Vallauris. 20-October/1966. Pen on lithograph on BFK Rives [After *Jacqueline de profil droit (III)*]. 58 x 36,5 cm. Christie's. #137, 5418, 06/10/08.

OPP.66:119

Homme et femme IV. Mougins. 22-October/1966. Aquatint with lithographic crayon & scraper on the grain prior to the acid bite of the granulated copper plate; also etching & drypoint, edition 50. 24,7 x 38 cm. Christie's. #0236, 1990, 04/29-30/08.

OPP.66:044; B.I:1385; Ba:1407.Bb2





Personnages nus II. Mougins. 22-October/1966.
Etching & aquatint, edition 50. 27,5 x 38 cm.
Christie's. #119, 2361, 09/20/11.

OPP.66:171; B.I:1383; Ba:1405.Bb2

Peintre et modèle au fume-cigarette II. Mougins. 22-October/1966. Aquatint.
27 x 37,6 cm. Sotheby's. #228, PF1334,
02/25/13.

OPP.66:189; B.I:1382; Ba:1404.Bb2





Couple avec enfant III. Mougins. 22-October/1966. Aquatint & scraper. 27,5 x 38,6 cm. Sotheby's. #230, PF1334, 02/25/13.

OPP.66:190; B.I:1384; Ba:1406.Bb2

La sieste: deux femmes avec un homme et un enfant. Mougins. 22-October/1966. Aquatint & etching. 27,5 x 37,2 cm. Sotheby's. #167, L19164, 10/17/19. Formerly Marina Picasso Collection.

OPP.66:406; Ba:1405.A





Peintre et modèle au fauteuil. Mougins. 23-October/1966. Aquatint, edition 50. 27 x 37,5 cm. Christie's. #335, 7612, 10/01/08.

OPP.66:124; B.I:1386; Ba:1408.Bb2

Le peintre et le modèle I. Mougins. 25-October/1966. Etching with aquatint on BFK Rives, edition 50. 31,7 x 47 cm. Sotheby's. #145, L03160, 03/25/03.

OPP.66:009; B.I:1387; Ba:1409.Bb2





Susanne et les vieillards IV. Mougins. 25-October/1966. Etching & aquatint on BFK Rives, edition 50. 27 x 37,4 cm. Christie's. #364, 1344, 02/12/04.

OPP.66:026; B.I:1390; Ba:1412.Bb2;
MPB:70.510; BD.16*:91; BM.05:71p;
GS.83*:135; JC.01a*:228

Modèle et peintre II. Mougins. 25-October/1966. Etching with aquatint on Rives BFK, edition 50. [27 x 37,9] 27,5 x 38] cm. Christie's. #178, 1428, 11/02/04.

OPP.66:030; B.I:1388; Ba:1410.Bb2





Peintre et modèle au collier III. Mougins. 25-October/1966. Etching, aquatint & drypoint, edition 50. 27,1 x 37,6 cm. Christie's. #336, 7612, 10/01/08.

OPP.66:123; B.I:1389; Ba:1411.Bb2;
JR.09*:187p; MF.10*:213p

Pisseuse surprise par deux vieillards. Mougins. 25-October/1966. Aquatint, lithograph & etching. 27,2 x 37,3 cm. Musée Picasso, Paris. Dation Jacqueline Picasso, 1990.

OPP.66:332; Ba:1412; MPP:1990.135Bis





Peintre et modèle accoudé. Mougins. 25-October/1966. Aquatint, lithograph & etching. 31,9 x 47 cm. Musée Picasso, Paris. Achat en vente publique en 2013 (Vente Hommage à Aldo Crommelynck).

OPP.66:346; Ba:1409; MPP:2013.1.8

Peintre et modèle allongé. Mougins. 25-October/1966. Aquatint, lithograph & etching. 27 x 37,8 cm. Musée Picasso, Paris. Achat en vente publique en 2013 (Vente Hommage à Aldo Crommelynck).

OPP.66:347; Ba:1410; MPP:2013.1.9





Femme à l'oiseau. Mougins. 26-October/1966. Aquatint & etching on Rives wove paper. 27,5 x 38 cm. Sotheby's. #237, PF1334, 02/25/13.

OPP.66:002; B.I:1391; Ba:1413.Bb2

Nu au fauteuil. Mougins. 26-October/1966. Aquatint on BFK Rives, edition 50. [38 x 27,5] 37,4 x 26,7 cm. Sotheby's. #135, N08740, 04/29/11.

OPP.66:018; B.I:1392; Ba:1414.Bb2





Femme nue au fauteuil III. Mougins. 26-October/1966.
Aquatint. 37,5 x 27 cm. Sotheby's. #239, PF1334, 02/25/13.

OPP.66:191; B.I:1393; Ba:1415.Bb2; MA.23a*:24

Nu au fauteuil. Mougins. 26-October/1966. Aquatint.
37,6 x 27,2 cm. Musée Picasso, Paris. Achat en vente
publique en 2013 (Vente Hommage à Aldo
Crommelynck).

OPP.66:348; Ba:1414; MPP:2013.1.10



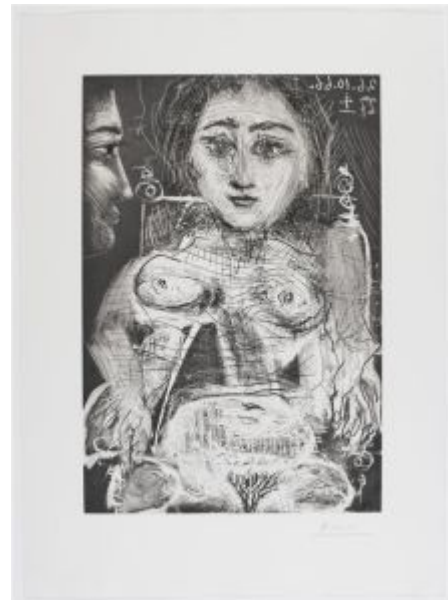


Femme assise dans un fauteuil IV. Mougins. 26~27-October/1966. Aquatint with etching, edition 50. [46,6 x 31,6] 47,5 x 32,5 cm. Sotheby's. #319, L08160, 04/01/08.

OPP.66:107; B.I:1394; Ba:1416.2Bb2; GS.83*:136

Portrait de Jacqueline au fauteuil. Mougins. 26~27-October/1966. Aquatint, etching, scraper & drypoint. 46,7 x 31,9 cm. Musée Picasso, Paris. Dation Jacqueline Picasso, 1990.

OPP.66:331; Ba:1416.2; MPP:1990.135



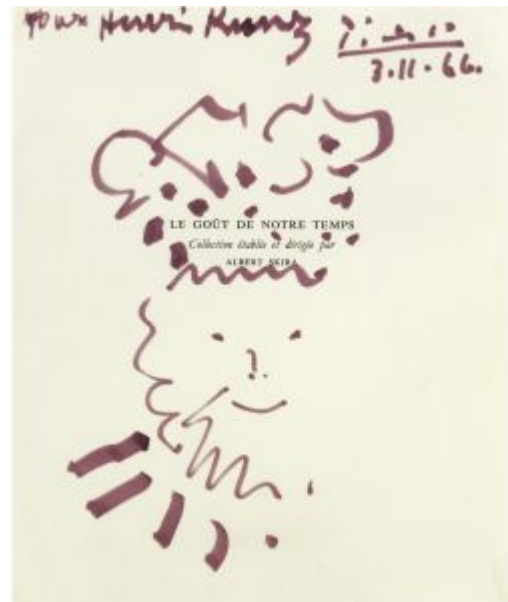


Portrait de Mademoiselle Angela Rosengart. Mougins. 30-October/1966. Aquatint. [42,7] 47,5 x 32,5 cm. John Szoke Editions. 2005.

OPP.66:094; B.II:1844; Ba:1417.B; MD.02:299p; MF.10*:185p

Tête d'homme (Pour Henri Kunz). Mougins. 3-November/1966. Felt-tip pen on paper. 17,8 x 14,6 cm. Sotheby's. #241, L08006, 02/06/08.

OPP.66:102





Trois personnages. Mougins. 4~5-November/1966. Colored wax crayons & pencil on paper. 60,3 x 49,5 cm. Christie's. #0169, 1902, 11/07/07.

OPP.66:096; PP.66:089; Z.XXV:229; CF.69:251

Le peintre et le modèle II. Mougins. 6-November/1966. Aquatint. [28 x 39] 27,3 x 38,4 cm. Christie's. #237, 1074, 05/01/02.

OPP.66:015; B.I:1395; Ba:1419.Bb2; DT.78:94





Au théâtre: le rapt. Mougins. 6-November/1966. Aquatint & etching on Rives wove paper, edition 50. [25,1 x 38,4] [25 x 38,5] 24,8 x 37,9 cm. Meyerovich Gallery. 2005. Also Museu Picasso, Barcelona.

OPP.66:041; B.II:1405; MPB:112.596;
JC.01a*:229; JR.09*:222p; MG.14*:3

Femme debout entourée de quatre hommes barbus (III). Mougins. 6-November/1966. Etching & aquatint, edition 50. 22,5 x 32,5 cm. Leslie Sacks Fine Art. 2005.

OPP.66:056; B.II:1406





Femme debout entourée de quatre hommes barbus (II). Mougins. 6-November/1966. Etching & aquatint. 22,4 x 32,2 cm. Musée Picasso, Paris.

OPP.66:280; MPP:1990.154

Deux têtes au béret (Para Palau i Fabre). Mougins. 7-November/1966. Blue & red felt-tip pen on paper. 26,7 x 25,1 cm. Fundació Palau, Caldes d'Estrac. (Inv 0000416).

OPP.66:151





Invitation avec annotations. Mougins. 7=November/1966.
Felt-tip pen. 9,5 x 21,5 cm. Fundació Palau, Caldes d'Estrac.
(Inv 8356 PIC).

OPP.66:152

Tête. Mougins. 7-November/1966. Blue felt-tip pen [Oic]. 26 x 26 cm. Private collection.

OPP.66:397; PP.66:090





Tête. Mougins. 7-November/1966. Red & blue felt-tip pen [OIC]. 26 x 26 cm. Private collection.

OPP.66:398; PP.66:091

Le joueur de diaule. Mougins. 9-November/1966. Etching with aquatint on Rives BFK, edition 50. 31,8 x 47 cm. Christie's. #178, 1292, 11/04/03.

OPP.66:024; B.I:1396; Ba:1421.Bb2





Femme nue se cachent le visage, avec deux hommes VI. Mougins. 11-November/1966. Aquatint, edition 50. 41,5 x 50 cm. Sotheby's. #323, N08123, 10/28/05.

OPP.66:052; B.II:1412; Ba:1427

Au théâtre: Vieillards regardant un barbu enlacer une femme nue. Mougins. 11-November/1966. Etching on wove paper, edition 50. [27,7 x 37,7] 32 x 40 cm. Leslie Sacks Fine Art. 2005.

OPP.66:054; B.II:1407; Ba:1422





Scène de théâtre: danseuse et deux vieillards VI. Mougins. 11-November/1966. Etching on Arches, edition 50. 22,3 x 32,1 cm. Christie's. #453, 1624, 02/09/06.

OPP.66:061; B.II:1410; Ba:1425

El Entierro del Conde de Orgaz L002. Mougins. 11-November/1966. Etching, edition 12. 22,5 x 32 cm. Sotheby's. #216, L06161, 10/03/06.

OPP.66:072; B.II:1467; Ba:1378;
GC:146.02; MPB:114.083.17; AU.89*:63;
GM.81*:349; LE.21*:273





Trois hommes et femme nus II. Mougins. 11-
November/1966. Etching, Edition 50. 27 x 37 cm.
Kunsthau Rapp. 2007.

OPP.66:092; B.II:1409; WI.07*:n/a

**Sous les feux de la rampe: femme nue
entre trois hommes II.** Mougins. 11-
November/1966. Etching & aquatint. 22,5 x
32,5 cm. Private collection.

OPP.66:213; B.II:1408; Ba:1423;
JR.09*:222p; MG.14*:4





El Entierro del Conde de Orgaz L014 (VII).
Mougins. 11-November/1966. Aquatint. 27,5 x
37,9 cm. Christie's. #93, 13879, 09/19/17.

OPP.66:257; B.II:1479

**Femme nue se cachant le visage, avec
deux hommes.** Mougins. 11-
November/1966. Aquatint. 28,2 x 37,9 cm.
Sotheby's. #168, L19164, 10/17/19.
Formerly Marina Picasso Collection.

OPP.66:402; Ba:1427.A





Trois personnages V. Mougins. 11-November/1966. Etching. 32 x 40 cm. Private collection.

OPP.66:408; B.II:1411

Sous les feux de la rampe: femme nue entre deux hommes III. Mougins. 12-November/1966. Etching & aquatint. [22,4 x 32,5] 22,3 x 32 cm. Christie's. #417, 1412, 09/28/04. Also Musée Picasso, Paris; Museu Picasso, Barcelona.

OPP.66:007; B.II:1414; MPB:112.608; MPP:1990.162; JC.01a*:230; TG.88:75





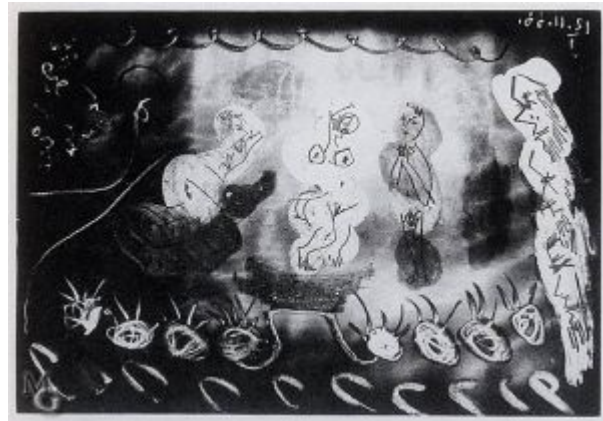
Fernand Crommelynck, Le Cocu Magnifique L012 (Le viol).

Mougins. 12-November/1966. Etching & aquatint on wove paper, edition 200. 22,1 x 32 cm. The Museum of Modern Art, NYC. Monroe Wheeler Fund. Also Christie's. #136, 1481, 02/08/05.

OPP.66:031; B.I:1255; Ba:1443.IIBb;
GC:140.12; GM.81*:346

Au théâtre: femme nue entre un jeune homme et un barbu. Mougins. 12-November/1966. Aquatint & etching on Rives, edition 50. [22,5] 22,6 x 32,5 cm. Meyerovich Gallery. 2006.

OPP.66:069; B.II:1413; Ba:1428.Bb;
JR.09*:222p





Sous les feux de la rampe: 'au viol!. Mougins. 12-November/1966. Etching & aquatint, edition 50. [22,5 x 32,5] 22,4 x 32,2 cm. Christie's. #181, 5020, 06/28/06. Also Musée Picasso, Paris; Museu Picasso, Barcelona.

OPP.66:070; B.II:1415; Ba:1430; MPB:112.610; MPP:1990.163; JC.01a*:231

Le peintre et son modèle V. Mougins. 12-November/1966. Aquatint & etching. 22,5 x 32,5 cm. Phillips. \$115, UK030119, 01/24/19.

OPP.66:185; B.II:1416; Ba:1431; TG.88:77





El Entierro del Conde de Orgaz L015 (II).

Mougins. 12-November/1966. Aquatint, on Romani wove paper. 22 x 32,3 cm. Christie's. #94, 13879, 09/19/17.

OPP.66:258; B.II:1480

Viol, avec un coq (II). Mougins. 12-November/1966. Drypoint, aquatint, etching & scraping. 22,15 x 32,2 cm. Musée Picasso, Paris. Dation Jacqueline Picasso, 1990.

OPP.66:281; MPP:1990.147





Scène de théâtre I. Mougins. 14-November/1966. Aquatint on BFK Rives, edition 50. 31,7 x 47 cm. Sotheby's. #144, L03160, 03/25/03.

OPP.66:010; B.I:1397; Ba:1444.Bc

Sur la scène: roi et couple-phallus V. Mougins. 15-November/1966. Aquatint on Rives Paper, edition 50. [22,5 x 32,5] 22,3 x 32,1 cm. Sotheby's. #61, N09647, 10/23-24/17. Also Musée Picasso, Paris; Museu Picasso, Barcelona.

OPP.66:004; B.II:1417; Ba:1445; MPB:112.611; MPP:1990.165; DW.05:102p; JC.01a*:233; TG.88:73





Personnages VI. Mougins. 15-November/1966. Etching & aquatint on Rives BFK, edition 50. [22,2 x 30,6] 22,3 x 32,1 cm. Christie's. #135, 1263, 09/24/03. Also Musée Picasso, Paris; Museu Picasso, Barcelona.

OPP.66:021; B.II:1418; Ba:1446; MPB:112.612; MPP:1990.166; DW.05:103p; JC.01a*:232; MG.18*:125p; NM.95:90p; TG.88:76; WW.91:636p

Fernand Crommelynck, Le Cocu Magnifique L005 (Femme équilibriste enlevée par un vieillard barbu à bicyclette devant le cocu et des spectateurs). Mougins. 15-November/1966. Etching on Rives. 31 x 41 [28 x 38] cm. Staatsgalerie Stuttgart. (Inv D 69/385). Graphische Sammlung. Also Christie's. #207, 8964, 12/01/00.

OPP.66:043; B.I:1248; Ba:1436.B; GC:140.05; ED.07*:91; GM.81*:339





El Entierro del Conde de Orgaz L001. Mougins. 15-November/1966. Etching & drypoint, edition 263. 22,5 x 32,3 cm. Christie's. #255, 7096, 11/29/05.

OPP.66:074; B.II:1466; Ba:1377.B; GC:146.01; AU.89*:63; GM.81*:348; PM.10:63p

El Entierro del Conde de Orgaz L011. Mougins. 15-November/1966. Etching. 22,5 x 32 cm. Sotheby's. #213, L06161, 10/03/06.

OPP.66:076; B.II:1476; Ba:1387.B; GC:146.11; AU.89*:63; GM.81*:358; PM.10:79p





El Entierro del Conde de Orgaz L008 (Antipodistes observés par une paysanne et sa petite fille). Mougins. 15-November/1966. Etching, Edition 263. 21,8 x 32 cm. Biblioteca Nacional, Madrid. Also Goldmark Gallery. 2007.

OPP.66:080; B.II:1473; GC:146.08; FC.00*:114; GM.81*:355; GP.96:354p; MA.81a*:376-377p

Femme équilibriste enlevé par un vieillard barbu à bicyclette devant le Cocu et des spectateurs. Mougins. 15-November/1966. Etching. 22 x 32,2 cm. Musée Picasso, Paris. Dation Jacqueline Picasso, 1990.

OPP.66:337; Ba:1436; MPP:1990.140





Sur la scène: Roi et couple-phallus. Mougins. 15-November/1966. Aquatint. 22,5 x 32,2 cm. Sotheby's. #169, L19164, 10/17/19. Formerly Marina Picasso Collection.

OPP.66:403; Ba:1445.Bb

Fernand Crommelynck, Le Cocu Magnifique L008. Mougins. 16-November/1966. Etching & aquatint, edition 200. [31 x 41] [22,5 x 32,5] 22,1 x 32,2 cm. Christie's. #43, 6683, 10/09/02.

OPP.66:019; B.I:1251; Ba:1439.B;
GC:140.08; DW.05:102p; GM.81*:342;
JC.01a*:234





Au théâtre: scène dans le style des Mille et une nuits. Mougins. 16-November/1966. Aquatint, lithograph & etching. 22 x 32,1 cm. Musée Picasso, Paris. Dation Jacqueline Picasso, 1990.

OPP.66:340; Ba:1439; MPP:1990.143

Deux hommes nus debout I. Mougins. 18-November/1966. Color pencils on paper [OIC]. 33 x 42 cm. Private collection.

OPP.66:305; PP.66:092; Z.XXV:223; GL.68a*:5





Femme dans un intérieur III. Mougins. 18-November/1966. Pencil on paper. 33 x 42 cm. Private collection.

OPP.66:306; PP.66:094; Z.XXV:224

Homme tenant un oiseau II. Mougins. 18-November/1966. Pencil on paper. 33 x 42 cm. Private collection.

OPP.66:307; PP.66:093; Z.XXV:225





Au théâtre: double meurtre II. Mougins. 22-November/1966. Etching on Rives paper, edition 50. 21,6 x 38,1 [22,5 x 32,5] cm. Leslie Sacks Fine Art. 2005.

OPP.66:037; B.II:1420; Ba:1448; UW.84*:91

Sur la scène: vieillard barbu s'appretant à poignarder une femme dans son lit III. Mougins. 22-November/1966. Aquatint & etching, edition 50. 22,5 x 32,5 cm. Leslie Sacks Fine Art. 2005.

OPP.66:038; B.II:1421; Ba:1449; UW.84*:92





Au théâtre: meurtre I. Mougins. 22-
November/1966. Etching on Rives paper, edition
50. 22,5 x 32,5 cm. Sotheby's. #62, N09647,
10/23-24/17.

OPP.66:039; B.II:1419; UW.84*:90

**Au théâtre: femme décapitée après un
bourreau, et viellard.** Mougins. 22-
November/1966. Etching & aquatint,
edition 50. [22,5 x 32,5] 22,2 x 32,4 cm.
Leslie Sacks Fine Art. 2006.

OPP.66:068; B.II:1423; Ba:1451.Bb;
JR.09*:223p





Au théâtre: David songeant à Bethsabée VI.
Mougins. 22-November/1966. Etching & aquatint
on wove paper. 21,3 x 32 cm. Bonhams. #132,
21014, 10/22/13.

OPP.66:225; B.II:1424; Ba:1452; JR.09*:223p

**Au théâtre: femme nue et vieillard cul-
de-jatte IV.** Mougins. 22-November/1966.
Aquatint & etching. 22,2 x 32,3 cm.
Sotheby's. #577, PF2167, 10/19/21.

OPP.66:259; B.II:1422; Ba:1450.Bb;
JR.09*:223p





Au théâtre: double muerte. Mougins. 22-
November/1966. Etching. 22,4 x 32 cm.
Sotheby's. #170, L19164, 10/17/19. Formerly
Marina Picasso Collection.

OPP.66:404; Ba:1448.Bb

L'atelier de l'artiste II. Mougins. 23-
November/1966. Etching on Rives, edition
50. [22,2 x 32] 22,5 x 32,5 cm. Christie's.
#137, 1481, 02/08/05.

OPP.66:032; B.II:1426; Ba:1454





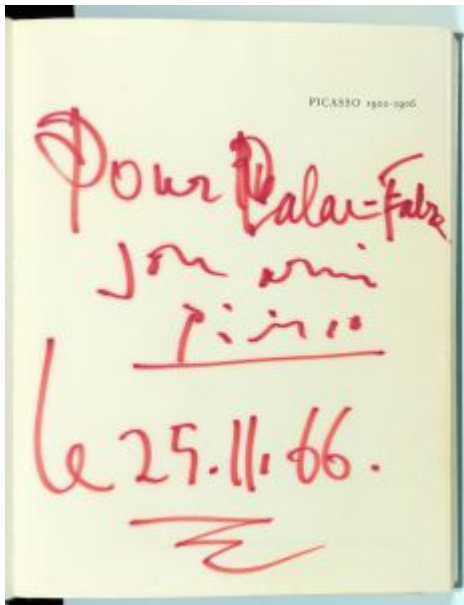
L'atelier de l'artiste I. Mougins. 23-November/1966. Etching. 22,5 x 32,5 cm. Sotheby's. #580, PF2167, 10/19/21.

OPP.66:323; B.II:1425; Ba:1453

Dédicace (Pablo Picasso, Le Désir attrapé pour la queue) (Para Palau i Fabre). Mougins. 25-November/1966. Red felt-tip pen on paper. 18,5 x 11,6 cm. Fundació Palau, Caldes d'Estrac.

OPP.66:153





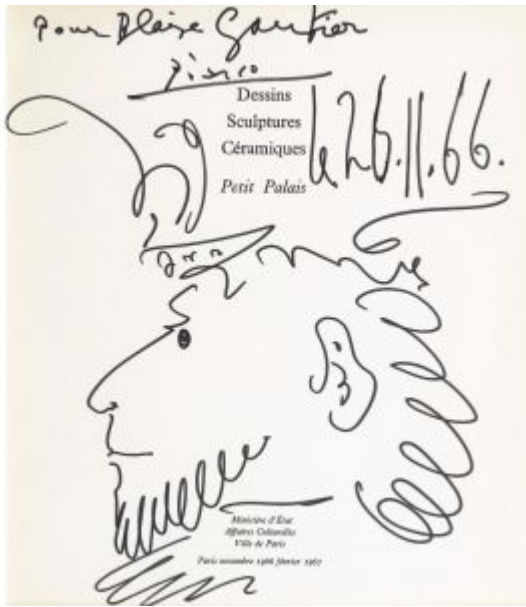
Dédicace (Pierre Daix et Georges Boudaille, Picasso 1900-1906). Mougins. 25-November/1966. red felt-tip pen on paper. 31,8 x 24,2 cm. Fundació Palau, Caldes d'Estrac.

OPP.66:160

Dédicace (Pablo Picasso, trozo de piel). Mougins. 25-November/1966. Red felt-tip pen on paper. 35 x 24,2 cm. Fundació Palau, Caldes d'Estrac.

OPP.66:161





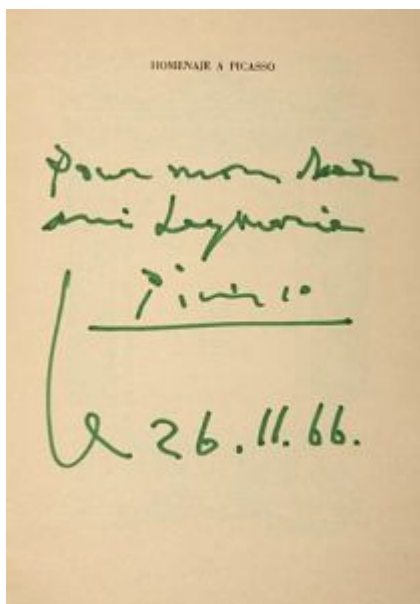
Tête (Pour Blaise Gautier). Mougins. 26-
November/1966. Felt-tip pen on printed paper.
23,5 x 20,8 cm. Sotheby's. #316, W07715,
03/15/07.

OPP.66:079

**Homme barbu avec un chapeau (Pour mon
cher ami Jean Leymarie).** Cannes. 26-
November/1966. Black felt-tipped pen on paper.
23,4 x 21,1 cm. Christie's. #119, 5394,
12/10/08. Formerly Artcurial. #439, 1320,
11/26/07.

OPP.66:116





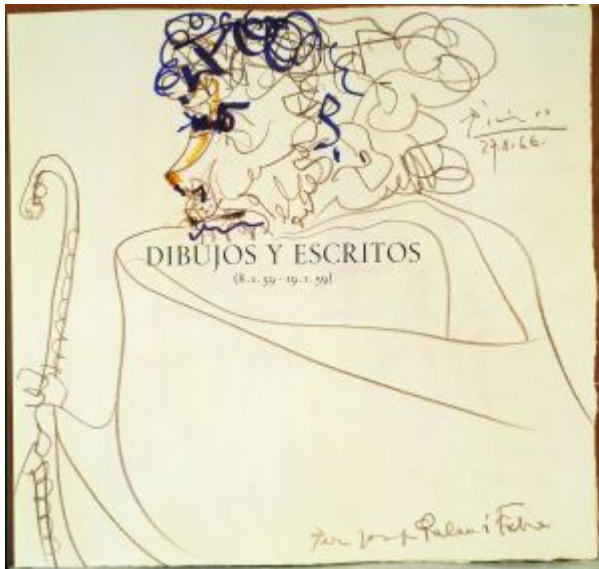
Dedicace (Homenaje a Picasso) (Pour mon ami Leymarie).
Mougins. 26-November/1966. Green fet-tip pen. S/U. Artcurial.
#555, 1489, 11/24/08.

OPP.66:131

Visage (Pour Marielle de Lavilleon). Mougins.
26-November/1966. Black felt-tipped pen on
frontispiece of Hommage à Pablo Picasso. [23,4 x
20,3] 23,5 x 21 cm. Christie's. #505, 21959,
05/13/23. Formerly Christie's. #56, 8963,
12/01/00.

OPP.66:178



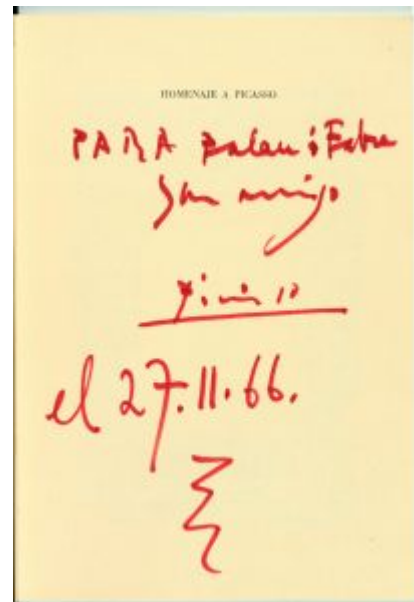


Pèlerin. Mougins. 27-November/1966. Brown pencil & blue, ochre felt-tip pens on paper. 36,3 x 38,3 cm. Fundació Palau, Caldes d'Estrac. (Inv 000214).

OPP.66:143

Dedicace (Homenaje a Picasso). Mougins. 27-November/1966. Red felt-tip pen on paper. 33,2 x 22,4 cm. Fundació Palau, Caldes d'Estrac.

OPP.66:159





Homme et femme II. Mougins. 30-November/1966. Pencil on paper. [33 x 42] [32,3 x 41,8] 32,5 x 41,9 cm. Bonhams. #30*AR, 26710, 03/23/21. Formerly Christie's. #49, 5535, 12/02/08; Christie's. #485, 6418, 02/08/00.

OPP.66:005; PP.66:096; Z.XXV:227

Acrobates devant un roi et son petit chien attendant leur théâtre I. Mougins. 30-November/1966. Etching, edition 50. 22,3 x 32,1 [22,5 x 32,5] cm. Leslie Sacks Fine Art. 2005.

OPP.66:055; B.II:1427





Fernand Crommelynck, Le Cocu Magnifique L001 (Le cocu et sa famille). Paris. 30-November/1966. Etching on a double sheet of wove paper, edition 200. 22,2 x 32 cm. Christie's. #151, 1800, 02/08/07.

OPP.66:078; B.I:1244; Ba:1432.B; GC:140.01; GM.81*:335; SD.05*:142

Fernand Crommelynck, Le Cocu Magnifique L003. Mougins. 30-November/1966. Drypoint & etching, edition 200. 22 x 32 cm. Christie's. #0234, 5244, 07/24/07.

OPP.66:093; B.I:1246; Ba:1434.B; GC:140.03; GG.87:26p; GM.81*:337





Minotaure et figures IV. Mougins. 30-November/1966. Etching on Rives wove paper, edition 50. [27,9 x 38,1] 32 x 42 cm. Meyerovich Gallery. 2008.

OPP.66:106; B.II:1428

Deux femmes nues assises et tête I. Mougins. 30-November/1966. Pencil on paper. 33 x 42 cm. Private collection.

OPP.66:308; PP.66:095; Z.XXV:226





Le Cocu et sa famille. Mougins. 30-November/1966. Etching. 22 x 32,1 cm. Musée Picasso, Paris. Dation Jacqueline Picasso, 1990.

OPP.66:333; Ba:1432; MPP:1990.136

Le Cocu devant un groupe avec le Séducteur et l'Amour. Mougins. 30-November/1966. Etching. 22 x 32,1 cm. Musée Picasso, Paris. Dation Jacqueline Picasso, 1990.

OPP.66:335; Ba:1434; MPP:1990.138





Homme et chien. Mougins. 1-December/1966.
Pencil on paper. 46 x 55 cm. Private collection.

OPP.66:309; PP.66:097; Z.XXV:228

Au théâtre: Vieil homme couronne de fleurs par des femmes et des fees.

Mougins. 2-December/1966. Drypoint on Rives paper, edition 50. 31,9 x 46,8 cm. Leslie Sacks Fine Art. 2005. Also Musée Picasso, Paris; Museu Picasso, Barcelona.

OPP.66:036; B.II:1429; Ba:1457;
MPB:112.579; MPP:1990.177;
DW.05:102p; JC.01a*:235; LU.93:429





El Entierro del Conde de Orgaz L012. Mougins.
2-December/1966. Etching, edition 12. 35,8 x
44,2 cm. Sotheby's. #214, L06161, 10/03/06.

OPP.66:073; B.II:1477; GC:146.12; AU.89*:63;
GM.81*:359



Le cocu couronné de fleurs II. Mougins.
2-December/1966. Etching. 22 x 32 cm.
Sotheby's. #585, PF2167, 10/19/21.

OPP.66:329; B.II:1430



Le barbu (Ricky Renteria). Mougins. 2-December/1966. Felt-tip pen [OIC]. 15 x 6 cm. Private collection. B&B. #1792, 06/19/91.

OPP.66:389; PP.66:098

El Entierro del Conde de Orgaz L007.
Mougins. 3-December/1966. Etching. 22,5 x 32 cm. Sotheby's. #212, L06161, 10/03/06.

OPP.66:075; B.II:1472; Ba:1383;
GC:146.07; AU.89*:63; GM.81*:354;
KB.04:140p





Fernand Crommelynck, Le Cocu Magnifique L004. Mougins. 3-December/1966. Etching on BFK Rives, edition 170. 22,2 x 32,4 cm. Christie's. #0225, 1990, 04/29/08.

OPP.66:109; B.I:1247; Ba:1435.B; GC:140.04; GM.81*:338

Sur la scène III. Mougins. 3-December/1966. Aquatint, etching & drypoint, edition 50. [37,8 x 47,2] 22,5 x 32,5 cm. Artcurial. #272, 1130, 06/12/07.

OPP.66:112; B.II:1431; Ba:1459





El Entierro del Conde de Orgaz L010 (Au théâtre: le cocu, Vénus, amour, flûtiste et chien). Mougins. 3-December/1966. Etching. 22,1 x 32,2 cm. Christie's. #89, 13879, 09/19/17.

OPP.66:192; B.II:1475; Ba:1386; GC:146.10; GM.81*:357; PM.10:80p

Au théâtre: le Cocu avec sa femme et un petit chien. Mougins. 3-December/1966. Aquatint, lithograph & etching. 21,9 x 32 cm. Musée Picasso, Paris. Dation Jacqueline Picasso, 1990.

OPP.66:336; Ba:1435; MPP:1990.139





El Entierro del Conde de Orgaz L004. Mougins. 4-December/1966. Etching & aquatint. 22,5 x 45,9 cm. Christie's. #0249, 7570, 04/02/08.

OPP.66:108; B.II:1469; GC:146.04; AU.89*:63; DO.07*:237; GM.81*:351

Vénus foraine III. Mougins. 5-December/1966. Etching & drypoint on wove paper, edition 50. [32 x 42] 31,3 x 41,5 cm. Christie's. #328, 6740, 07/02/03.

OPP.66:020; B.I:1232; Ba:1461.IIIBb2; GS.83*:137





Fernand Crommelynck, Le Cocu Magnifique L002 (Scène de théâtre: Amazone, Vénus de foire, homme au bouquet). Mougins. 5-December/1966. Etching & aquatint on wove paper, edition 230. 22 x 32 cm. Christie's. #145, 5831, 06/02/05.

OPP.66:047; B.I:1245; Ba:1433.B; GC:140.02; GM.81*:336; SD.05*:143

Au théâtre: couple avec un flûtiste et un petit chien II. Mougins. 5-December/1966. Aquatint with etching & drypoint. 22 x 32 cm. Sotheby's. #586, PF2167, 10/19/21.

OPP.66:328; B.II:1432





Scène de théâtre: Amazone, Vénus de foire, Homme au bouquet. Mougins. 5-December/1965. Etching. 22 x 32,2 cm. Musée Picasso, Paris. Dation Jacqueline Picasso, 1990.

OPP.66:334; Ba:1433; MPP:1990.137

Charette foraine conduite par un petit animal, avec nu et amour dans le ciel. Mougins. 6-December/1966. Drypoint. 27,5 x 38 cm. Museum Würth, Künzelsau. (Inv 4854).

OPP.66:181; B.I:1398; Ba:1462.Bb2; RD.08*:143p





Peintre et son modèle. Mougins. 7-December/1966. Engraving. 37,7 x 47,3 cm. Sotheby's. #137, N08740, 04/29/11.

OPP.66:167; B.II:1434; Ba:1464

Le Cocu posant pour une photographie devant des spectateurs I. Mougins. 7-December/1966. Etching with aquatint on wove paper. 22,5 x 32 cm. Bonhams. #113, 21795, 10/21/14.

OPP.66:224; B.II:1433; Ba:1463





Baie avec bateaux and palmiers. Mougins. 7-December/1966.
Blue ballpoint pen. 21,5 x 14 cm. Piasa. #33, 2142, 02/15/24.
Formerly Max Pellequer Collection.

OPP.66:407

Fernand Crommelynck, Le Cocu Magnifique L010. Mougins. 8-December/1966. Etching on wove paper, edition 230. 21,9 x 31,9 cm. Christie's. #143, 5831, 06/02/05.

OPP.66:048; B.I:1253; Ba:1441.B;
GC:140.10; CC.01*:64p; GM.81*:344





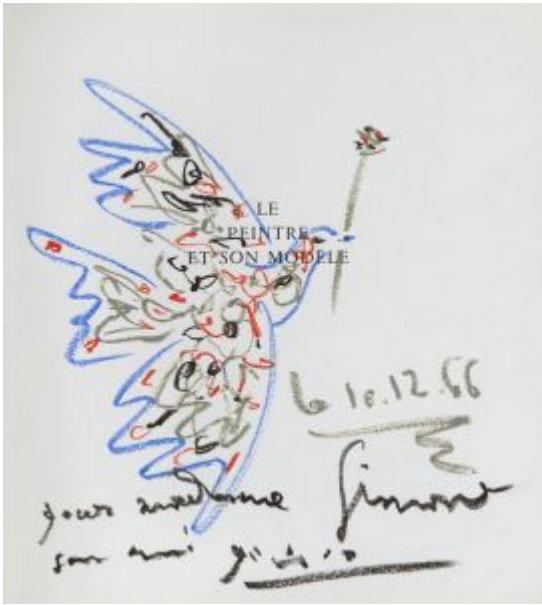
Le divertissement. Mougins. 8-December/1966.
Etching, edition 50. 37,7 x 47,1 cm. Artcurial.
#404, 1765, 11/03/09.

OPP.66:130; B.II:1435; Ba:1465; JR.09*:230p

L'Aubade. Mougins. 8-December/1966.
Aquatint, lithograph & etching. 22 x 32,2
cm. Musée Picasso, Paris. Dation Jacqueline
Picasso, 1990.

OPP.66:342; Ba:1441; MPP:1990.145





Colombe (Pour Madame Simone). Mougins. 10-December/1966. Pastel on paper. 30 x 27,2 cm. Hélène Bailly Gallery. Formerly Piasa. #64, 0320, 03/12/20. Formerly.

OPP.66:324

Fernand Crommelynck, Le Cocu Magnifique L009 (Le cocu assistant à la comparution, devant l'inquisition, d'une femme nue enchaînée par un bourreau). Mougins. 11-December/1966. Etching on wove paper, edition 230. [20,8 x 32] [22,5 x 32,5] 22,1 x 32,2 cm. Christie's. #144, 5831, 06/02/05.

OPP.66:045; B.I:1252; Ba:1440.B; GC:140.09; GM.81*:343; JC.01a*:236





Fernand Crommelynck, Le Cocu Magnifique L011. Mougins. 11-December/1966. Etching, edition 200. 29 x 35,9 [22,5 x 32,5] cm. Christie's. #254, 7096, 11/29/05.

OPP.66:051; B.I:1254; Ba:1442.B; GC:140.11; GM.81*:345

Fernand Crommelynck, Le Cocu Magnifique L007. Mougins. 11-December/1966. Etching & aquatint. [22 x 32] 22,1 x 32,1 cm. The Museum of Modern Art, NYC. (Inv 332.1969.7). Monroe Wheeler Fund.

OPP.66:122; B.I:1250; Ba:1438.B; GC:140.07; GM.81*:357





El Entierro del Conde de Orgaz L005. Mougins.
11-December/1966. Etching. 22,5 x 32,5 cm.
Christie's. #97, 1144, 09/18/13.

OPP.66:202; B.II:1470; Ba:1381; GC:146.05;
GM.81*:352

Trois personnages nus assis. Mougins.
11-December/1966. Graphite & black
crayon on paper. [36,8 x 53,8] 37 x 53.5
cm. Bonhams. #31, 27623, 12/06/22.
Formerly David Benrimon Fine Art, New
York; Sotheby's. #139, N09220, 11/05/14.

OPP.66:219; PP.66:099; Z.XXV:231





Écuyère de cirque avec Vénus de foire dans sa coquille et deux hommes barbus. Mougins. 11-December/1966. Etching. 21,9 x 32 cm. Musée Picasso, Paris. Dation Jacqueline Picasso, 1990.

OPP.66:339; Ba:1438; MPP:1990.142

Le Cocu assistant à la comparution, devant l'inquisition d'une femme nue enchaînée par un bourreau. Mougins. 11-December/1966. Etching. 22 x 32,2 cm. Musée Picasso, Paris. Dation Jacqueline Picasso, 1990.

OPP.66:341; Ba:1440; MPP:1990.144





L'Enlèvement avec spectateurs. Mougins. 11-December/1966. Etching. 22 x 32,2 cm. Musée Picasso, Paris. Dation Jacqueline Picasso, 1990.

OPP.66:343; Ba:1442; MPP:1990.146

Meurtre, avec spectateurs II. Mougins. 12-December/1966. Etching. [37.8 x 47] 22,4 x 32,2 cm. Christie's. #0372, 7388, 03/28/07. Also Musée Picasso, Paris; Museu Picasso, Barcelona.

OPP.66:006; B.II:1436; Ba:1466; MPB:112.628; JC.01a*:237





Fernand Crommelynck, Le Cocu Magnifique L006 (Au théâtre: Le clystère). Mougins. 12-December/1966. Aquatint. 22,2 x 32 cm. The Museum of Modern Art, NYC. (Inv 332.1969.6). Monroe Wheeler Fund. Also Sotheby's. #189, N08436, 05/01/08.

OPP.66:110; B.I:1249; Ba:1437.B; GC:140.06; GM.81*:340

Au théâtre: le clystère. Mougins. 12-December/1966. Aquatint, lithograph & etching. 21,9 x 32,2 cm. Musée Picasso, Paris. Dation Jacqueline Picasso, 1990.

OPP.66:338; Ba:1437; MPP:1990.141





Dans l'atelier: modèle et deux amateurs II.
Mougins. 13-December/1966. Drypoint, etching & aquatint on wove paper. 22,5 x 32,5 cm.
Bonhams. #144, 18560, 05/03/11.

OPP.66:008; B.II:1438; Ba:1468; MF.10*:214p

Le divertissement (IV). Mougins. 13-December/1966. Etching & drypoint, edition 50. 22,2 x 32 cm. Christie's. #338, 7612, 10/01/08.

OPP.66:125; B.II:1437; Ba:1467.IVBa



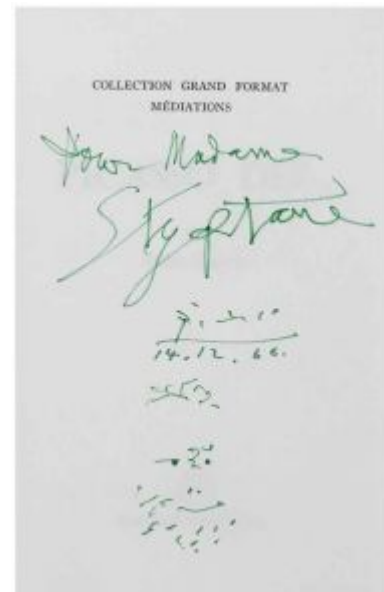


Le divertissement (IV). Mougins. 13-December/1966. Etching & scraping. 22,1 x 32,2 cm. Musée Picasso, Paris.

OPP.66:279; Ba:1467.4; MPP:1990.185

Tête de Rembrandt. Mougins. 14-December/1966. Green felt-tip pen on paper. 21,6 x 13,3 cm. Christie's. #225, 2555, 05/02/12.

OPP.66:174



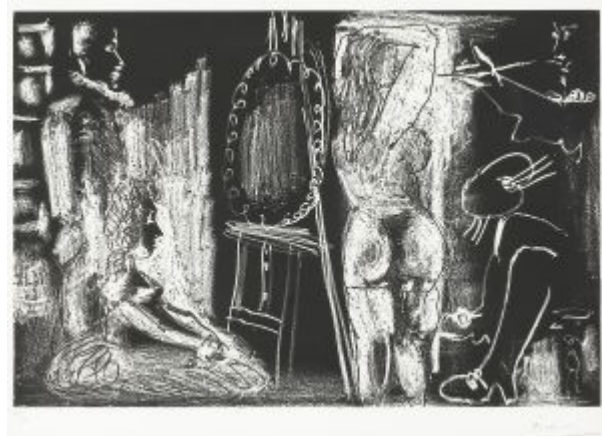


Couple regardant une toile où figurent Les trois Grâces I. Mougins. 16-December/1966. Aquatint & drypoint etching, edition 50. [22,5 x 32,5] 22 x 31,6 cm. Masterworks Fine Art Gallery. 2005.

OPP.66:035; B.II:1439; JR.09*:227p

Visiteurs dans l'atelier V. Mougins. 16-December/1966. Etching with aquatint on BFK Rives wove paper, edition 50. 31,7 x 47 cm. Jillian and David Knutson Collection. Also Sotheby's. #270, L06160, 03/28/06.

OPP.66:062; B.I:1399; Ba:1472.Bb2; CH.04*:44; MF.10*:214p





Le portraitiste IV. Mougins. 16-December/1966. Etching on arches wove paper, edition 50. 32 x 42 cm. Anderson Galleries. 2006.

OPP.66:077; B.I:1234; Ba:1471.Bb2; KK.93:38; LV.06*:n/a; MF.10*:215p

Un couple d'amateurs VI. Mougins. 16-December/1966. Aquatint. 31,6 x 41,6 cm. Sotheby's. #135, N08674, 10/29/10.

OPP.66:134; B.I:1233; Ba:1470.Bb2





El Entierro del Conde de Orgaz L009. Mougins. 16-December/1966. Etching. 22,5 x 32,5 cm. Christie's. #88, 13879, 09/19/17.

OPP.66:212; B.II:1474; GC:146.09; GM.81*:356

Carte postale adressée à Gustave, Inès et Gérard Sassier. Cannes. 16-December/1966. Ink. S/U. Artcurial. #287, 1331, 10/22/07. Formerly Inès and Gérard Sassier Collection.

OPP.66:221





Visage (René Char, Les transparents). Mougins. 16-December/1966. Cartalégraphie. 32,7 x 25,8 cm. Private collection.

OPP.66:226; B.I:1238; Ba:1858; GC:138.3

Visage (René Char, Les transparents). Mougins. 16-December/1966. Cartalégraphie. 32,7 x 24,7 cm. Sotheby's. #475, PF6025, 10/11/06.

OPP.66:227; B.I:1237; Ba:1857; GC:138.2



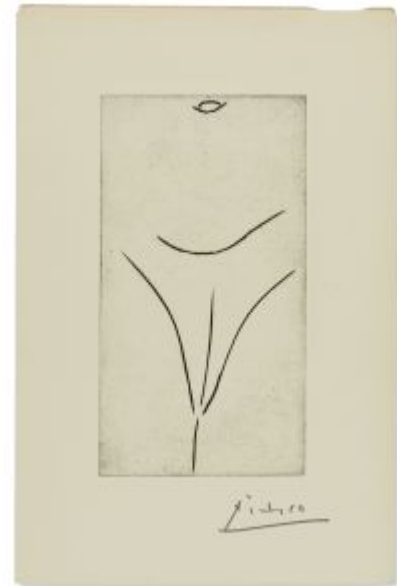


Visage (René Char, Les transparents). Mougins. 16-December/1966. Cartalégraphie. 32,7 x 25,8 cm. Sotheby's. #221, PF1503, 06/25/15.

OPP.66:228; B.I:1239; Ba:1859; GC:138.4

Femme (Pierre-André Benoit, Les Livres de Picasso réalisés par PAB). Mougins. 16-December/1966. Burin on celluloid. 16,5 x 9 cm. Musée Picasso, Paris.

OPP.66:229; B.I:1235; GC:138.0; MPP:3578; DW.05:89p; JC.01a*:215





Le peintre et son modèle II. Mougins. 17-December/1966. Aquarelle on wove. 31,9 x 47 cm. Christie's. #327, 7282, 09/20/06.

OPP.66:058; B.II:1440; Ba:1473.Bb

Tête d'Homme moustachu. Mougins. 17-December/1966. Red earthenware plaque printed with engobe pad, edition 500. 10,5 x 16,5 cm. Fundació Palau, Caldes d'Estrac. (Inv 0000220). Also Christie's. #199, 5063, 02/11/11.

OPP.66:095; AR:539; B.III:180



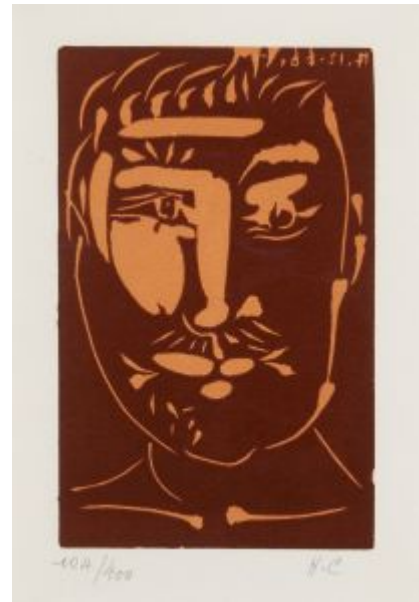


Tête d'homme barbu. Mougins. 17-December/1966. Linoleum cut. 21,5 x 14,5 cm. Artcurial. #357, 1331, 10/22/07.

OPP.66:118; B.I:1240; Ba:1850

Tête d'Homme moustachu. Mougins. 17-December/1966. Linoleum cut in colors on wove paper. 17,5 x 11 cm. Christie's. #357, 4232, 06/25-26/12.

OPP.66:177; B.II:1853; Ba:1851





Peintre et modèle. Mougins. 17-December/1966.
Aquatint. 32 x 46,5 cm. Sotheby's. #92, N10015,
11/21/19. Formerly Marina Picasso Collection.

OPP.66:405; Ba:1473

**Personnages (Arnold Kohler, Gérald Cramer,
Trente Ans d'Activité).** Mougins. 18-December/1966.
Etching on Guarro, edition 125. 32,5 x 22,3 cm.
Christie's. #146, 9844, 06/03/04.

OPP.66:028; B.I:1241; Ba:1474.Bc; GC:150





Femme au divan avec une jeune fille et un vieillard assis II (Georges Bloch, Pablo Picasso: Catalogue de l'oeuvre gravé et lithographié, 1966-1969). Mougins. 18-December/1966. Etching. 32,5 x 22,5 cm. Graphische Sammlung der ETH Zürich.

OPP.66:042; B.II:1441; Ba:1475.B; GC:152; MD.02*:340p; MI.01*:176

Femme au divan avec une jeune fille et un vieillard assis. Mougins. 18-December/1966. Etching. 32 x 22,2 cm. Musée Picasso, Paris. Dation Pablo Picasso, 1979.

OPP.66:349; Ba:1475; MPP:2720





L'atelier de l'artiste I. Mougins. 19-December/1966. Aquatint, etching & drypoint on paper, edition 50. 54,5 by 64 cm. Christie's. #58, 19674, 04/15/21.

OPP.66:003; B.II:1442; Ba:1476; KK.93:41

La sérénade rustique III. Mougins. 19-December/1966. Aquatint & drypoint on wove paper, edition 50. 19,7 x 32,1 cm. Christie's. #0401, 1897, 10/30/07.

OPP.66:097; B.II:1444; Ba:1478





L'atelier de l'artiste II. Mougins. 19-December/1966. Aquatint, etching & drypoint, on wove paper. 22,5 x 32,5 cm. Bonhams. #75, 25796, 03/31/20.

OPP.66:206; B.II:1443; Ba:1477.B; MF.10*:213p

Suzanne et les vieillards. Mougins. [31] 21-December/1966. [Pencil] Pastel on paper. [46 x 55] 116,8 x 139,7 cm. Galleri Faurshou. 2005.

OPP.66:040; PP.66:125; Z.XXV:250





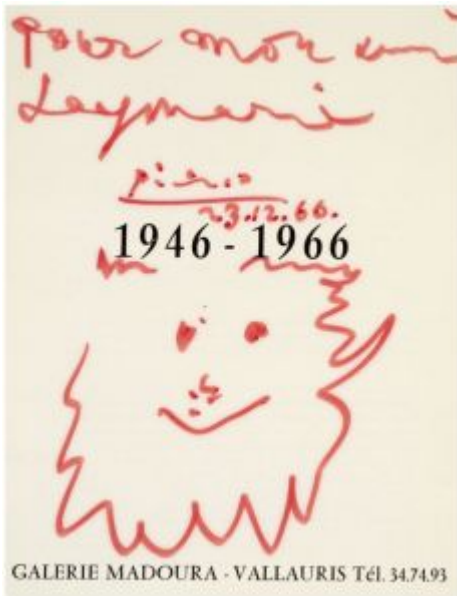
Deux femmes nues II. Mougins. 22-December/1966. Crayon on paper. 49,6 x 60,8 cm. Galería Guillermo de Osma, Madrid. 2016. Formerly Sotheby's. #400, N08676, 11/03/10.

OPP.66:135; PP.66:101; Z.XXV:237; LA.04*:n/a

Homme et femme assis trinquant. Mougins. 22-December/1966. Color pencils on paper [OïC]. 50 x 61 cm. Private collection.

OPP.66:310; PP.66:100; Z.XXV:230





Homme barbu (Pour mon ami Leymarie). Mougins. 23-December/1966. Ink. S/U. Artcurial. #443, 1320, 11/26/07.

OPP.66:115

Femme et enfant nu I. Mougins. 23-December/1966. Brown conté crayon on paper. [50 x 61] 48,9 x 60 cm. Sotheby's. #25, 12/07/99. Formerly PaceWildenstein Gallery.

OPP.66:183; PP.66:102; Z.XXV:232;
NY.95e*:102; WS.95a*:163





Mangeur de pastèque et coq II. Mougins. 23-December/1966. Brown pencil on paper [OïC]. 50 x 61 cm. Private collection.

OPP.66:311; PP.66:103; Z.XXV:233

Femme au coq accroupie III. Mougins. 23-December/1966. Pencil on paper. 49,5 x 61 cm. Private collection.

OPP.66:313; PP.66:104; Z.XXV:236





Femme nue assise. Mougins. 24-December/1966. Brown colored pencil on paper. [49,5] 49,7 x 61 cm. Private collection.

OPP.66:136; PP.66:106; Z.XXV:234; WS.07*:58

Le pêcheur IV. Mougins. 24-December/1966. Brown pencil on paper [OIC]. 50 x 61 cm. Private collection.

OPP.66:312; PP.66:105; Z.XXV:235





Femme nue assise I. Mougins. 25-December/1966. Colored crayons & pencil on paper. 49,5 x 61 cm. Private collection. Formerly Sotheby's. #62, L03007, 10/21/03.

OPP.66:022; PP.66:107; Z.XXV:239; CF.69:33; CH.68c*:15

Femme nue assise et enfant II. Mougins. 25-December/1966. Brown pencil. 50 x 61 cm. Private collection.

OPP.66:194; PP.66:108; Z.XXV:238





Homme assis et mangeur de pastèque III.
Mougins. 25-December/1966. Pencil on paper.
49,5 x 61 cm. Private collection.

OPP.66:315; PP.66:109; Z.XXV:243

Plat 'Pour Jean Ramié'. Vallauris. 25-December/1966. Terre de faïence, painted & glazed. 26,5 x 26,2 cm. Espace Tajan.
#21, 2121, 03/17/21.

OPP.66:325





Homme assis (Autoportrait) I. Mougins. 26-December/1966. Brown pencil on paper. 55 x 46 cm. The Hakone Open-Air Museum, Japan.

OPP.66:001; PP.66:110; Z.XXV:249; PB.21:162; RD.00*:143; UW.93*:42; WR.96:165p; YP.13*:58

Personnages et têtes II. Mougins. 26-December/1966. Pencil on paper. 55 x 46 cm. Private collection.

OPP.66:314; PP.66:111; Z.XXV:240





Trois hommes debout I. Mougins. 27-December/1966. Graphite on paper. 54,6 x 45,7 cm. Colección LL-A. Formerly Sotheby's. #53, PF1416, 12/04/14; Galería Leandro Navarro. 2013.

OPP.66:193; PP.66:115; Z.XXV:247; CF.69:38; HK.13*:n/a; HO.16a*:143p; MA.13*:n/a

Femme nue couchée IV. Mougins. 27-December/1966. Brown wax crayon on paper. [46 x 65] 46 x 54,6 cm. Christie's. #257, 22658, 03/08/24. Formerly Christie's. #549, 20181, 11/13/21.

OPP.66:235; PP.66:113; Z.XXV:244; NY.11f*:48; UW.93*:43





Femme assise VI. Mougins. 27-December/1966. Brown pencil. 55 x 46 cm. Private collection.

OPP.66:236; PP.66:116; Z.XXV:248

Trois baigneurs VII. Mougins. 27-December/1966. Brown pencil. 55 x 46 cm. Hélène Bailly Gallery. 2018.

OPP.66:237; PP.66:114; Z.XXV:245





Mangeuse de pastèque III. Mougins. 27-December/1966. Crayon on paper. 55 x 46 cm. Christie's. #227, 16932, 02/28/19.

OPP.66:239; PP.66:112; Z.XXV:242; GL.68a*:7

Nu couché à l'oiseau V. Mougins. 27-December/1966. Brown pencil on paper [Oic]. 46 x 55 cm. Private collection.

OPP.66:317; PP.66:117; Z.XXV:259; BS.81*:105; BS.86a*:86; VI.81*:85





Trois nus à la toilette II. Mougins. 27-December/1966 ~ 5-May/1967. Crayon on paper. 55 x 46 cm. Private collection. Formerly Galerie Berggruen, Paris.

OPP.66:165; PP.67:182; Z.XXV:241; WO.92*:86

Femme, enfant et mousquetaire I. Mougins. 29-December/1966. Pencil [colored crayons]. 55 x 45,5 [46] cm. Private collection. Formerly Sotheby's. #520, 11/29/89.

OPP.66:132; PP.66:118; Z.XXV:246; HN.13:348p





Mousquetaire et profils III. Mougins. 29-December/1966. Brown pencil on paper [OïC]. 55 x 46 cm. Private collection.

OPP.66:320; PP.66:120; Z.XXV:257



Femme nue et mousquetaire II. Mougins. 29-December/1966. Brown pencil on paper [OïC]. 55 x 46 cm. Private collection.

OPP.66:321; PP.66:119; Z.XXV:258



La toilette II. Mougins. 30-December/1966. Brown chalk on paper. 55 x 46 cm. Private collection.

OPP.66:164; PP.66:122; Z.XXV:252; WO.92*:85

Homme, femme et enfant I. Mougins. 30-December/1966. Colored pencil on paper. [55 x 46] 54,6 x 45,7 cm. Hélène Bailly Gallery. 2018. Formerly Sotheby's. #208, N09861, 05/15/18; Sotheby's. #408, N09711, 05/17/17.

OPP.66:238; PP.66:121; Z.XXV:254



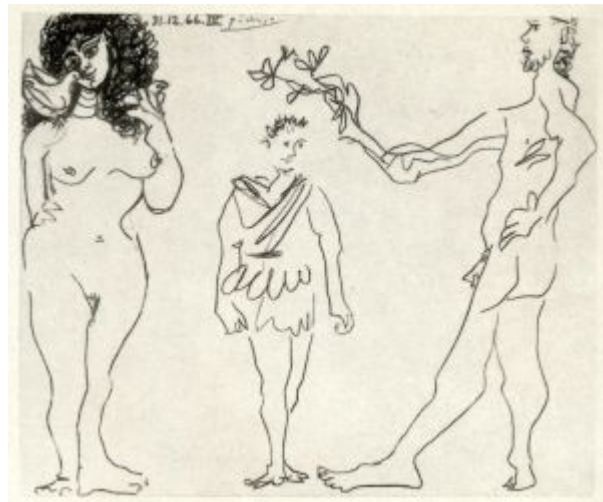


Mousquetaires III. Mougins. 30-December/1966. Color crayons on paper [OIC]. 56 x 46 cm. Private collection.

OPP.66:322; PP.66:123; Z.XXV:266; GS.83*:25

Jeune garçon couronné IV. Mougins. 31-December/1966. Brown pencil on paper [OIC]. 46 x 55 cm. Private collection.

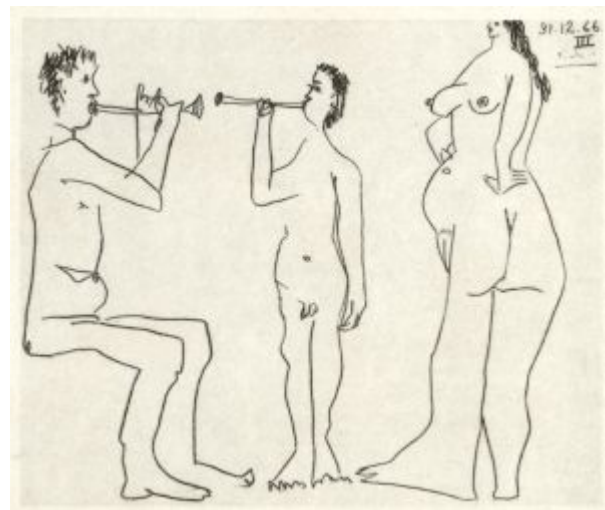
OPP.66:316; PP.66:128; Z.XXV:251; NY.71b*:98





Femme nue et musicien II. Mougins. 31-December/1966. Pencil on paper. 46 x 55 cm. Private collection.

OPP.66:318; PP.66:126; Z.XXV:255



Femme nue et musiciens III. Mougins. 31-December/1966. Brown pencil on paper [OIC]. 46 x 55 cm. Private collection.

OPP.66:319; PP.66:127; Z.XXV:256



Homme au chapeau (Pour le docteur Renée). Mougins. 31-December/1966. Color pencil [OïC]. 22,2 x 15,2 cm. Private collection. Formerly Sotheby's. #128, 09/30/99.

OPP.66:390; PP.66:124



L'arlequin et sa compagne. Mougins. 1966. Collotype printed in colors, edition 125 [After *Les deux saltimbanques (Arlequin et sa compagne)*]. 94,2 x 73,5 cm. Sotheby's. #252, N08358, 11/01/07.

OPP.66:098

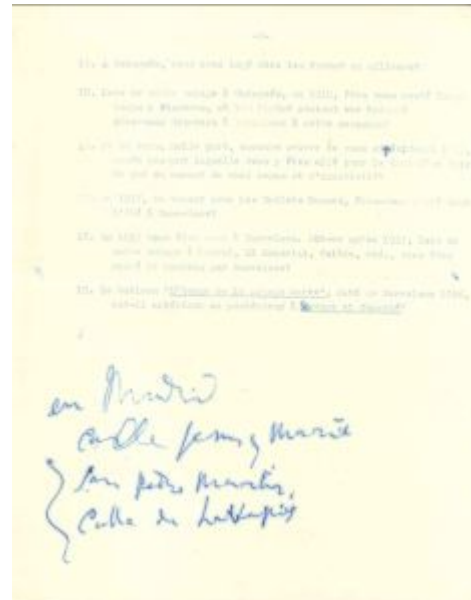


Jacqueline accroupie. Mougins. 1966. Offset print on Arches [After *Jacqueline aux mains croisées*]. 63,4 x 43,2 cm. Artcurial. #346, 1331, 10/22/07.

OPP.66:114; CC:250

Questionnaire pour el livre Picasso en Catalogne. Mougins. [1966]. Pen. 21 x 27,5 cm. Fundació Palau, Caldes d'Estrac. (Inv 8311 PIC).

OPP.66:127





Labyrinthe. Mougins. 1966. Brown pencil & blue, red, purple & orange felt-tip pens on paper. 36,6 x 38,3 cm. Fundació Palau, Caldes d'Estrac. (Inv 0000213).

OPP.66:142

Visage de viel homme. Mougins. 1966. Red felt-tip pen on paper. 36,3 x 38,3 cm. Fundació Palau, Caldes d'Estrac. (Inv 0000215).

OPP.66:144





Buste de viel homme, les bras croisés.

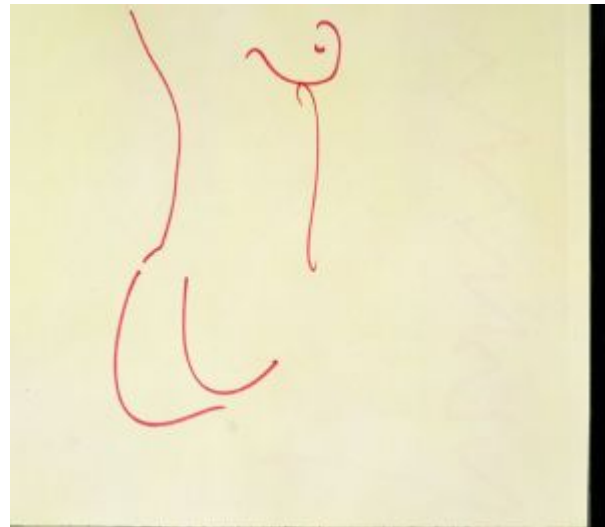
Mougins. 1966. Red felt-tip pen on paper. 36,5 x 38,5 cm. Fundació Palau, Caldes d'Estrac. (Inv 0000216).

OPP.66:145

Torse de femme se retournant.

Mougins. 1966. Red felt-tip pen on paper. 36,2 x 38,5 cm. Fundació Palau, Caldes d'Estrac. (Inv 0000217).

OPP.66:146





Tête d'homme barbu souriant. Mougins. 1966.
Red felt-tip pen & brown pencil on paper. 36,5 x
38,9 cm. Fundació Palau, Caldes d'Estrac. (Inv
0000218).

OPP.66:147

Autoportrait faunesque. Mougins. 1966.
Charcoal, black & red felt-tip pen on burlap.
37,5 x 39,5 cm. Fundació Palau, Caldes
d'Estrac. (Inv 0000219).

OPP.66:148





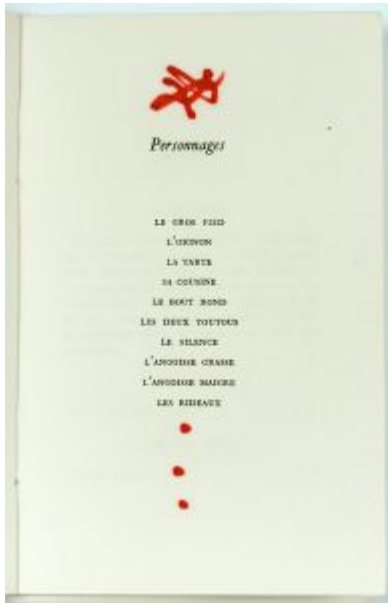
Petite tête barbue souriante. Mougins. 1966.
Ballpoint pen on paper. 9 x 13,5 cm. Fundació
Palau, Caldes d'Estrac. (Inv 0000288).

OPP.66:149

Dédicace (Pablo Picasso, Le Désir attrapé pour la queue). Mougins. 1966. Red felt-tip pen on paper. 18,5 x 11,6 cm. Fundació Palau, Caldes d'Estrac.

OPP.66:154



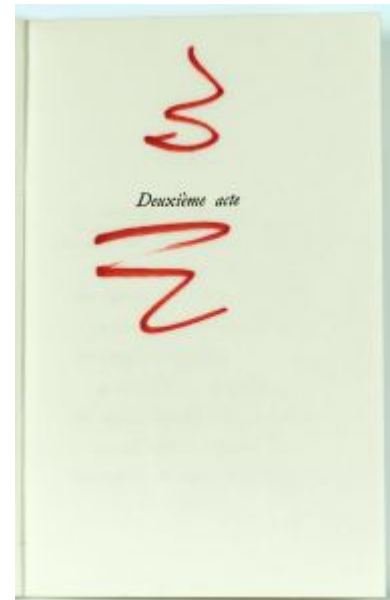


Dédicace (Pablo Picasso, Le Désir attrapé pour la queue).
Mougins. 1966. Red felt-tip pen on paper. 18,5 x 11,6 cm. Fundació Palau, Caldes d'Estrac.

OPP.66:155

Dédicace (Pablo Picasso, Le Désir attrapé pour la queue).
Mougins. 1966. Red felt-tip pen on paper. 18,5 x 11,6 cm.
Fundació Palau, Caldes d'Estrac.

OPP.66:156





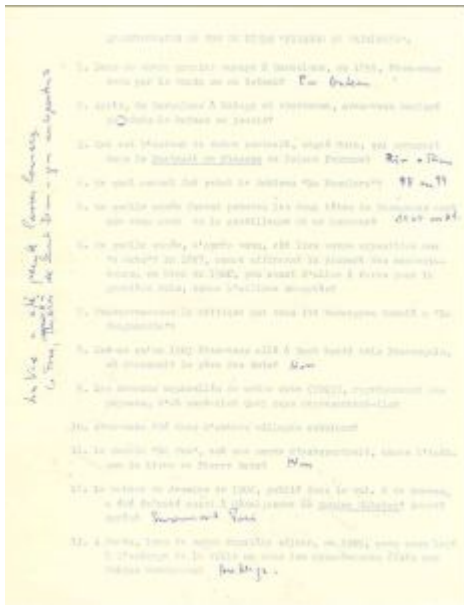
Dédicace (Pablo Picasso, Le Désir attrapé pour la queue). Mougins. 1966. Red felt-tip pen on paper. 18,5 x 11,6 cm. Fundació Palau, Caldes d'Estrac.

OPP.66:157

Dédicace (Pablo Picasso, Le Désir attrapé pour la queue). Mougins. 1966. Red felt-tip pen on paper. 18,5 x 11,6 cm. Fundació Palau, Caldes d'Estrac.

OPP.66:158





Questionnaire pour el livre Picasso en Catalogne.
Mougins. [1966]. Pen. 21 x 27,5 cm. Fundació Palau, Caldes
d'Estrac. (Inv 8311 PIC).

OPP.66:162

Homme au chapeau (Pierre-André Benoit, Alors).
Mougins. 1966. Print (Cartalégraphie). 22,5 x 16 cm.
Sotheby's. #223, PF1503, 06/25/15.

OPP.66:176; B.IV:2012; GC:156





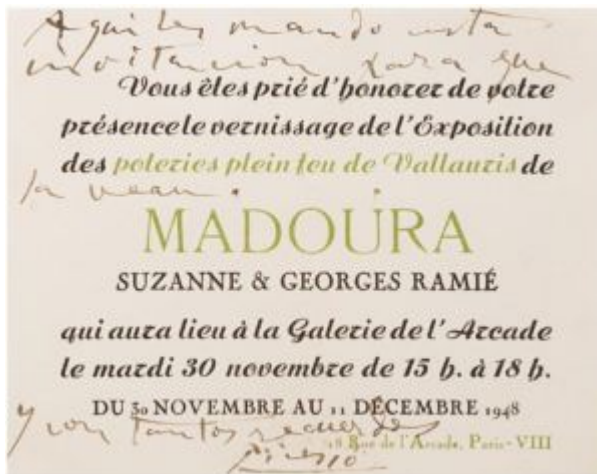
Sixième Biennale de Peinture. Mougins. 1966.
Lithographic poster in colors on Arches paper [After *Mère et enfant*]. 49,5 x 40 cm. Bonhams. #7230, 19159, 05/22/11.

OPP.66:179; CC:243

Colombe. Mougins. 1966. Blue color pencil on endpaper. 64 x 56 cm. Museum Würth, Künzelsau. (Inv 3274).

OPP.66:180; RD.08*:140p





Inscription. Mougins. 1966. Black ink on Madoura Vallauris 1946-1966 page. 11,7 x 14,9 cm. Phillips. #124, 04/29/13..

OPP.66:196

Tête de femme. Mougins. [1966]. Color lithograph [After *Tête de femme*]. 53,3 x 40,6 cm. Gray's Auctioneers. #69, 05/15/13.

OPP.66:197





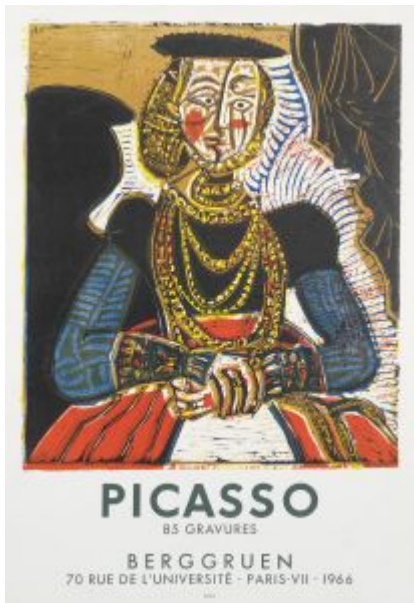
Femme accoudée. Paris. [1966]. Color lithograph, edition 175 [After *Femme accoudée*]. 60,3 x 44,5 cm. Masterworks Fine Art Gallery. 2006.

OPP.66:198

Visage (René Char, Les transparents). Mougins. 1966. Engraving, on buff wove paper. 32,6 x 24,6 cm. Christie's. #278, 9728, 12/04/13.

OPP.66:208; B.I:1236; Ba:1856; GC:138.1





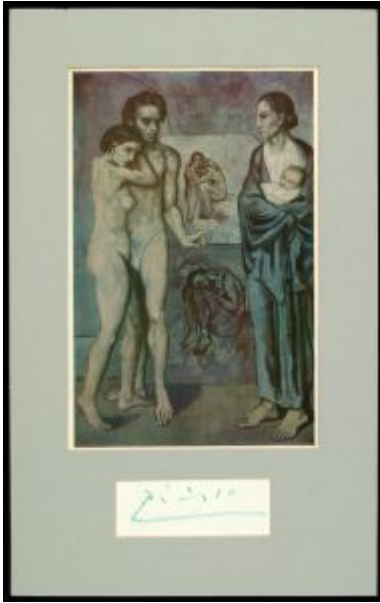
85 Gravures, Berggruen. Mougins. 1966. Lithographic poster in colors, on wove, edition 2000 [After *Portrait de jeune fille II (d'après Cranach le Jeune)*]. 75,5 x 52 cm. Bonhams. #27, 18284, 09/23/10.

OPP.66:209; CC:228

La Provence, point omega. Mougins. 1966. Poster on vélin. 65 x 46,5 cm. Artcurial. #180, 2504, 06/04/14.

OPP.66:216; CC:277



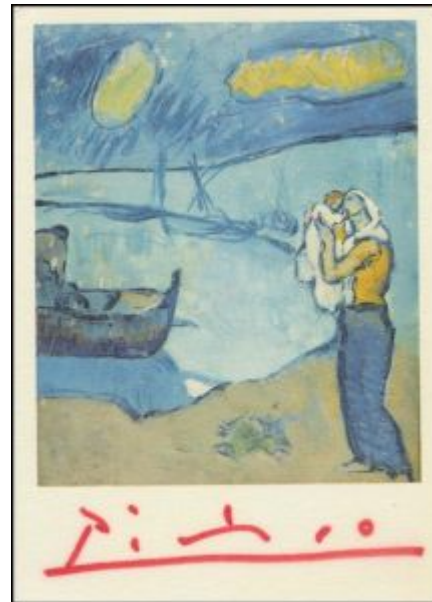


La vie et signature. Mougins. 1966. Offset lithograph in colors on Arches [After *La vie*]. S/U. Ira and Lary Goldberg Auctioneers. #9, 294, 03/31/-04/01/01.

OPP.66:217

Signature. Mougins. [1966]. Ink on vintage color postcard [After *Les adieux du pêcheur*]. S/U. Schubertiade Music. 2013.

OPP.66:218





Tête de jeune fille à la colombe (Jean Cassou, Papiers collés 1910-1914). Mougins. 1966. Lithograph [After *Tête de jeune fille*]. 66 x 51,1 cm. Christie's. #63, 20976, 04/22/22. Also Fundació Palau, Caldes d'Estrac.

OPP.66:245; LW.15*:148p

Visage (René Char, Les transparents). Mougins. 1966. Cardboard cuts on thin laid China paper. 25 x 18,6 cm. Christie's. #78, 16955, 09/18/19.

OPP.66:282; B.I:1369; Ba:1860





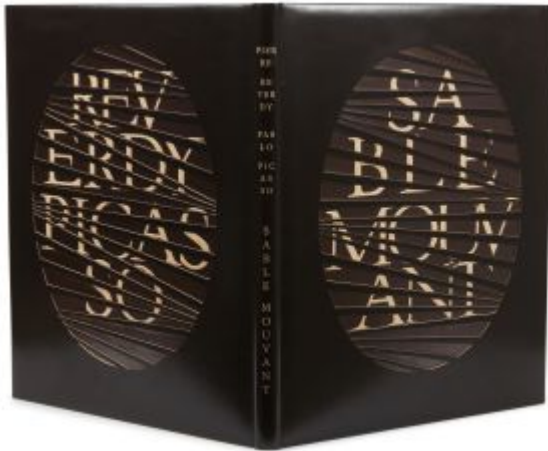
Signature (Le cocu magnifique). Mougins.
1966. Ink on paper. 22,1 x 32,3 cm. Sotheby's.
#169, N10135, 10/26/19.

OPP.66:284

Pichet. Vallauris. [1966]. Painted & glazed
ceramic; pitcher. 23,2 cm. Sotheby's. #15,
L21005, 04/14/21. Formerly Sotheby's.
#8, N10249, 11/26/19. Marina Picasso
Collection.

OPP.66:285





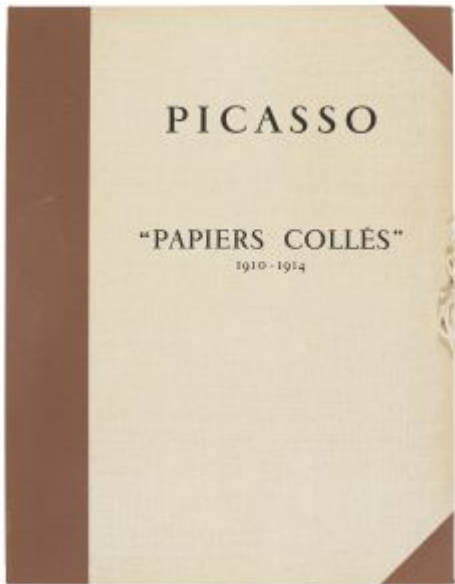
Couverture (Pierre Reverdy, Sable mouvant).
Paris. 1966. Mixed media. 48 x 37,7 cm. Artcurial.
#324, 4156, 09/21/21.

OPP.66:326

Tête. Mougins. [1966]. Pencil on paper. S/U. McMullen
Museum of Art, Boston College. Formerly The Carolyn A.
and Peter S. Lynch Collection.

OPP.66:330





Couverture (Jean Cassou, Papiers collés 1910-1914). Mougins. 1966. Lithograph. 66 x 51,1 cm. Christie's. #63, 20976, 04/22/22.

OPP.66:351

Violon, verre et bouteille (Jean Cassou, Papiers collés 1910-1914). Mougins. 1966. Lithograph [After *Violon, verre et bouteille*]. 66 x 51,1 cm. Christie's. #63, 20976, 04/22/22.

OPP.66:352





Nature morte 'Qui' (Jean Cassou, Papiers collés 1910-1914). Mougins. 1966. Lithograph [After *Nature morte 'Qui'*]. 66 x 51,1 cm. Christie's. #63, 20976, 04/22/22.

OPP.66:353

Violon (Jean Cassou, Papiers collés 1910-1914). Mougins. 1966. Lithograph [After *Violon*]. 66 x 51,1 cm. Christie's. #63, 20976, 04/22/22.

OPP.66:354





Tête d'homme au chapeau (Jean Cassou, Papiers collés 1910-1914). Mougins. 1966. Lithograph [After *Tête d'homme au chapeau*]. 66 x 51,1 cm. Christie's. #63, 20976, 04/22/22.

OPP.66:355

Bouteille de Vieux Marc, verre et journal (Jean Cassou, Papiers collés 1910-1914). Mougins. 1966. Lithograph [After *Bouteille de Vieux Marc, verre et journal*]. 66 x 51,1 cm. Christie's. #63, 20976, 04/22/22.

OPP.66:356





Bouteille, journal et verre sur une table (Jean Cassou, Papiers collés 1910-1914). Mougins. [1956] 1966. Lithograph [After *Bouteille, journal et verre sur une table*]. 66 x 51,1 cm. Christie's. #63, 20976, 04/22/22.

OPP.66:357

Tête à la pipe (Jean Cassou, Papiers collés 1910-1914). Mougins. 1966. Lithograph [After *Tête à la pipe*]. 66 x 51,1 cm. Christie's. #63, 20976, 04/22/22.

OPP.66:358





Portrait d'homme (Notre Dame de Vie). Mougins. 1966. Linoleum cut printed in cream white, rincée with l'encre de Chine and hand-coloring. 43,5 x 37,7 cm. Sotheby's. #109, L22009, 10/13/22. Formerly Marina Picasso Collection.

OPP.66:362; Ba:1848.B; PP.L:188

Affiche pour Sixième Biennale de Peinture. Paris. 1966. Lithographic poster [After *Mère et enfant*]. 71,8 x 47,6 cm. Private collection.

OPP.66:364



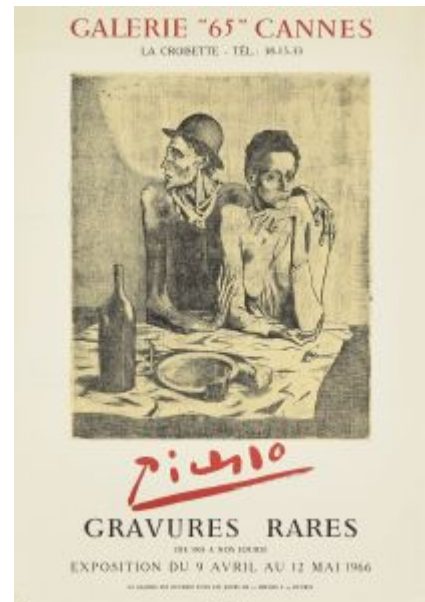


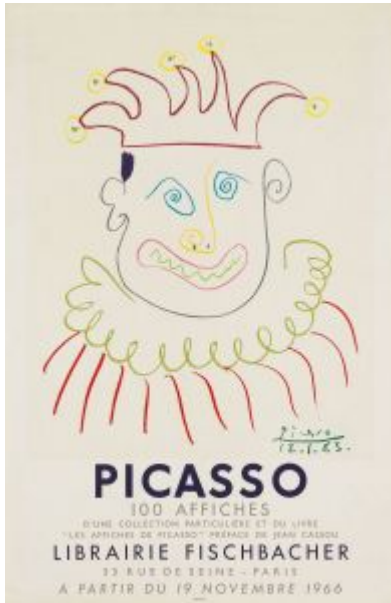
Grande tête de taureau (Figure découpée) (Avec Carl Nesjar). Mougins. 1966. Concrete engraving. 350 cm. Stockholm University, Kungshamra, Sweden.

OPP.66:365; PP.66:130; WS:647

Pablo Picasso Gravures rares Galerie 65 Cannes 9 avril au 12 mai 1966. Cannes. 1966. Poster [After *La Suite des Saltimbanques L01 (Le repas frugal)*]. S/U. Artcurial. #254, IT4365, 09/26-10/03/23.

OPP.66:399





Picasso 100 affiches Librairie Fischbacher à partir du 19 novembre 1966. Mougins. 1966. Poster [After *Carnava*]. 75 x 48 cm. Artcurial. #241, IT4365, 09/26-10/03/23.

OPP.66:400

Bethsabée (d'après Rembrandt). Mougins. 1966. Aquatint printed in colors on Rives wove paper, edition 300. 26,2 x 37 cm. Sotheby's. #422, N07717, 11/02/01.

OPP.66:017; LE.21*:406





Faun arlequin. Mougins. 1966. Wax crayon on paper. 28,5 x 20,5 cm. Beck and Eggeling International Fine Art. 2005.

OPP.66:034

La danseuse naine. Mougins. 1966. Offset lithograph in colors on Arches, edition 60 [After *Danseuse naine (La Nana)*]. 57,1 x 32 cm. Christie's. #384, 7063, 06/29/05.

OPP.66:049; CC:234



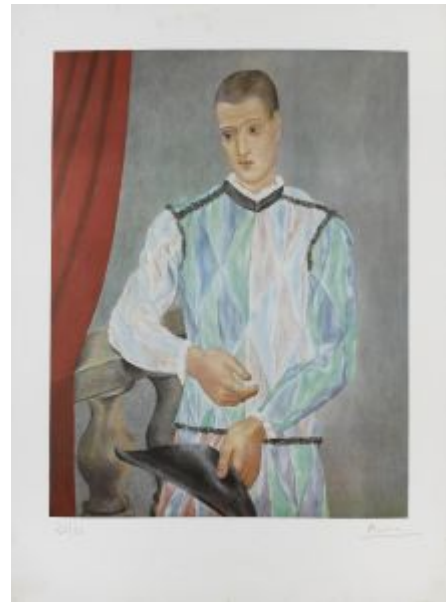


Visage (Jean Cassou, Papiers collés 1910-1914). Mougins. 1966. Offset lithograph in color, on wove paper laid onto a larger sheet of cream Arches. 66 x 51,1 cm. Fundació Palau, Caldes d'Estrac. (Inv 0000698). Also Christie's. #376, 7063, 06/29/05.

OPP.66:050

Arlequin. Mougins. 1966. Offset lithograph in colors on Arches, edition 60 [After *L'arlequin de Barcelone*]. 57,8 x 43,8 cm. Christie's. #292, 1654, 05/01/06.

OPP.66:063; CC:230





Mère et enfant. Mougins. 1966. Offset lithograph in colors on Arches, edition 60 [After *Mère et enfant au fichu*]. 46 x 41,3 cm. Christie's. #293, 1654, 05/01/06.

OPP.66:064; CC:231

Madame Ricardo Canals. Mougins. 1966. Offset lithograph in colors on Arches, edition 60 [After *Portrait de Madame Benedetta Canals*]. 58,1 x 44,1 cm. Christie's. #294, 1654, 05/01/06.

OPP.66:065; CC:232





Pierreuse, la main sur l'épaule (Odette). Mougins. 1966. Offset lithograph in colors on Arches, edition 60 [After *Pierreuse, la main sur l'épaule (Odette)*]. 57,8 x 46 cm. Christie's. #295, 1654, 05/01/06.

OPP.66:066; CC:233

L'étreinte. Mougins. 1966. Collotype with stencil in color, edition 125 [After *L'étreinte dans la mansarde*]. 50,8 x 54,6 cm. Masterworks Fine Art Gallery. 2006.

OPP.66:067

